

# CTR Employer Survey Report

Thank you for completing your Commute Trip Reduction survey. This report contains the survey results.

**Employer Id :** E25213

**Employer :** Western Washington University

**Worksite :** Western Washington University

**Street :** 516 HIGH ST Parking & Transport

**Jurisdiction :** City of Bellingham

**Survey Type :** Online

**Survey Date :** 4/23/2012

**Response Rate :** 83%

## Drive Alone & One-Way VMT Rates at this Worksite

**Drive Alone :** 58.7%

**One-Way VMT per employee :** 6.2

## Employees and Survey Response Information

**Reported Total Employees at Worksite:** 1,553

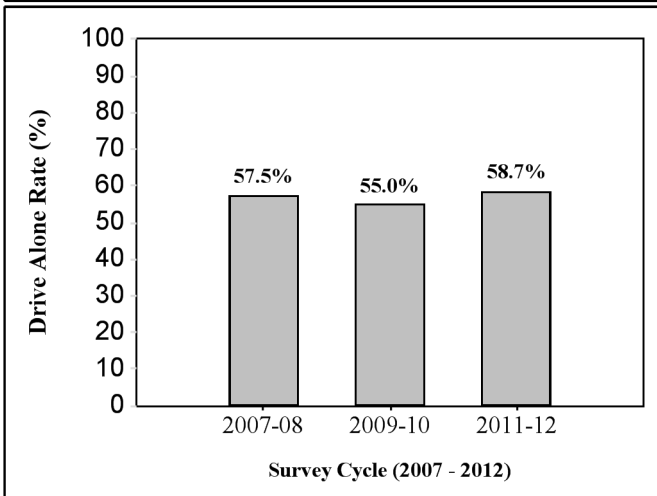
**Surveys Distributed :** 1,553

**Surveys Returned :** 1,295

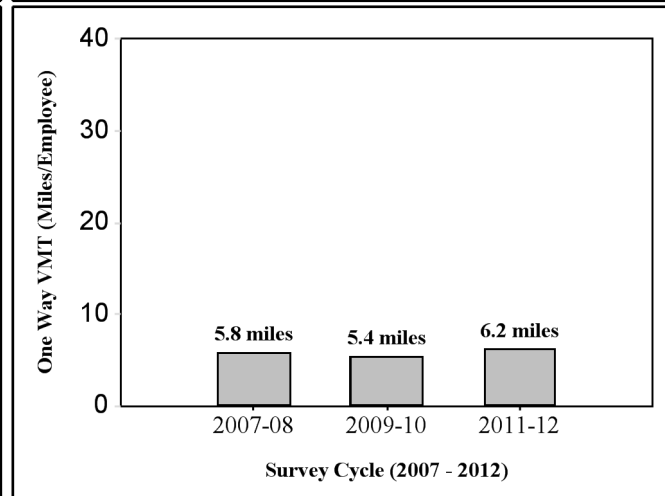
**Surveys Returned by CTR Affected Employees :** 953

**Total Estimated CTR - Affected Employees at Worksite :** 1,143

**Drive Alone - All Employees**



**One Way VMT per Employee - All Employees**



## Site History and Goal

Cycle	Drive Alone - All	Drive Alone - CTR Affected	VMT / Employee - All	VMT / Employee - CTR Affected
2007-08	57.5%	59.2%	5.8	6.1
2009-10	55.0%	54.2%	5.4	5.1
2011-12	58.7%	58.8%	6.2	5.8
<b>Goal for 2011-12</b>	51.8%	53.3%	5.0	5.3
<b>Percent Change From First Survey</b>	2.1%	-0.7%	6.9%	-4.9%

Note: An "affected" employee is a person who works full-time and who begins a regular work day at a single worksite between 6 am and 9 am on two or more weekdays for at least twelve continuous months.

\*\* Goal is an estimate only, based on an assumed 10% reduction in drive alone rate and a 13% reduction in VMT/employee from the first survey conducted from 2007 to 2010. However, jurisdictions can set higher goals, and may set different goals for individual worksites. Goal is calculated off of the first survey without fill-in applied. Drive alone rate includes one-person motorcycles.

Employer ID: E25213

### Comparison Between Rates With and Without Fill-In

The survey response rate is indicated on Page 1. To encourage a response rate of at least 70%, additional drive alone trips are added to survey results for worksites with a response rate of less than 70%. For these worksites it is assumed that non-responding employees between the actual response rate and 70% drive alone 5 days a week. These additional trips represent the "Fill-In" applied. Note that fill-in is not applied to a worksite's first survey in the 2007 to 2012 cycle (their baseline survey).

	2007-2008	2009-2010	2011-2012
<b>Drive Alone - All Employees*</b>	57.5%	55.0%	58.7%
<b>VMT/Employee - All Employees</b>	5.8	5.4	6.2
<b>Drive Alone - CTR Affected Employees*</b>	59.2%	54.2%	58.8%
<b>VMT/Employees - CTR Affected Employees</b>	6.1	5.1	5.8

\* Drive alone rate includes one person motorcycles.

**Congratulations! You achieved a survey response rate of 70% or higher on this survey. Fill-in comparison for previous surveys, if applicable, are included in the chart above.**

### GHG Emissions: Total for Drive Alone, Carpools, Vanpools

#### Annual Greenhouse Gas Emissions (Metric Tons CO2e) for Roundtrip Commute\*

	2007-2008	2009-2010	2011-2012
Emissions for Surveyed Employees	1,803	1,800	1,734
Estimated Emissions for Total Employment	2,550	2,462	2,079

\* Estimated based on VMT from commuters driving alone, carpooling, vanpooling, or motorcycling, without fill-in applied.

### Bus Transit Passenger Miles and Rail Transit Passenger Miles\*

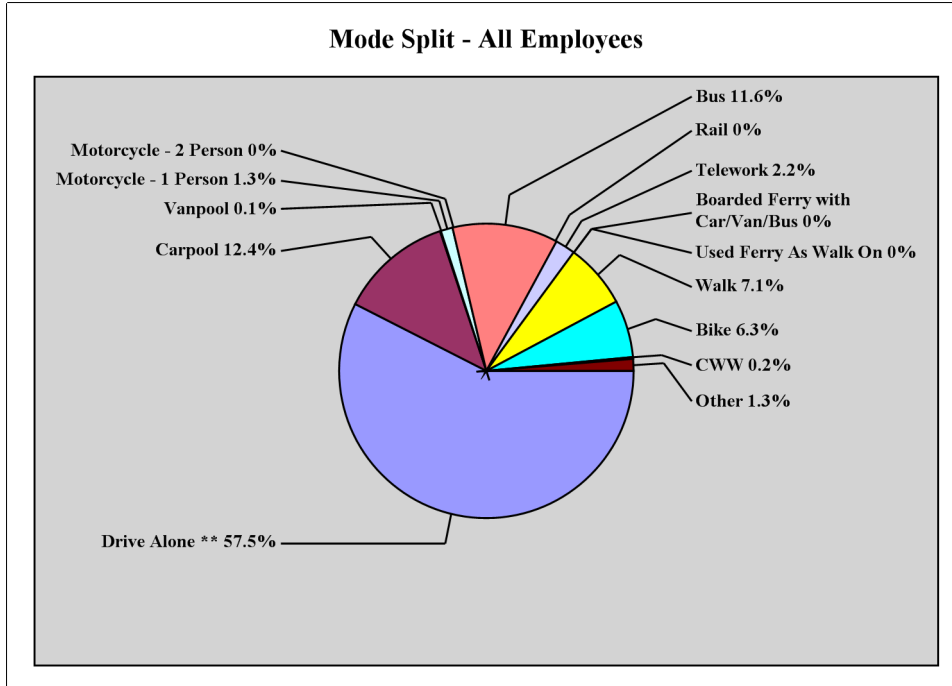
Annual Transit Passenger Miles (includes Roundtrip Commute)	2007-2008	2009-2010	2011-2012
Bus Annual Passenger Miles - Surveyed Employees	583,900	683,300	492,400
Bus Annual Passenger Miles - Estimated for Total Employment	825,801	934,768	590,499
Train/Light Rail/Streetcar Annual Passenger Miles - Surveyed Employees	11,000	200	18,000
Train/Light Rail/Streetcar Annual Passenger Miles - Estimated for Total Employment	15,557	274	21,586
Ferry Annual Passenger Miles - Surveyed Employees	0	0	0
Ferry Annual Passenger Miles - Estimated for Total Employment	0	0	0

\* Transit passenger miles can be used to gauge changes in transit usage, and also to calculate greenhouse gas emissions from transit commute trips. However, emissions attributable to transit vary widely, depending on the efficiency/energy source of transit vehicles and transit vehicle passenger load (typically ranging from 0.1 to 0.9 pounds CO2e emissions/passenger mile). Employers are strongly encouraged to contact their local transit agencies for more precise information on GHG emissions for their transit trips. If nothing else is available, the value of 0.47 pounds (0.00021 metric tons) per passenger mile can be used to estimate CO2e emissions for bus transit, and 0.39 pounds (0.00018 metric tons) CO2e emissions per passenger mile for train/light rail/streetcar.

Employer ID : E25213

### Commute Trips By Mode - All Employees \*

Q.4a: Last week, what type of transportation did you use each day to commute TO your usual work location? (Mode used for the longest distance.)



Mode	Trips During This Survey Week	% of Trips During This Survey Week	% of Trips During Previous Survey Week	Employees Who Used This Mode at Least Once During This Survey Week	% of Employees Who Used This Mode at Least Once During This Survey Week	% of Employees Who Used This Mode at Least Once During Previous Survey Week
Drive Alone **	3,575	57.5%	53.5%	851	65.8%	63.4%
Carpool	768	12.4%	13.2%	222	17.2%	18.7%
Vanpool	5	0.1%	0.2%	1	0.1%	0.3%
Motorcycle - 1 Person	78	1.3%	1.5%	21	1.6%	2.4%
Motorcycle - 2 Person	2	0%	0.1%	2	0.2%	0.2%
Bus	720	11.6%	13.3%	201	15.5%	17.4%
Rail	2	0%	0%	1	0.1%	0.1%
Telework	138	2.2%	2.6%	79	6.1%	7.1%
Boarded Ferry with Car/Van/Bus	0	0%	0%	0	0%	0%
Used Ferry As Walk On	0	0%	0%	0	0%	0%
Walk	443	7.1%	7.4%	117	9%	9.8%
Bike	392	6.3%	7%	102	7.9%	9.3%
CWW	13	0.2%	0.3%	10	0.8%	1.1%
Other	82	1.3%	0.8%	23	1.8%	1.5%

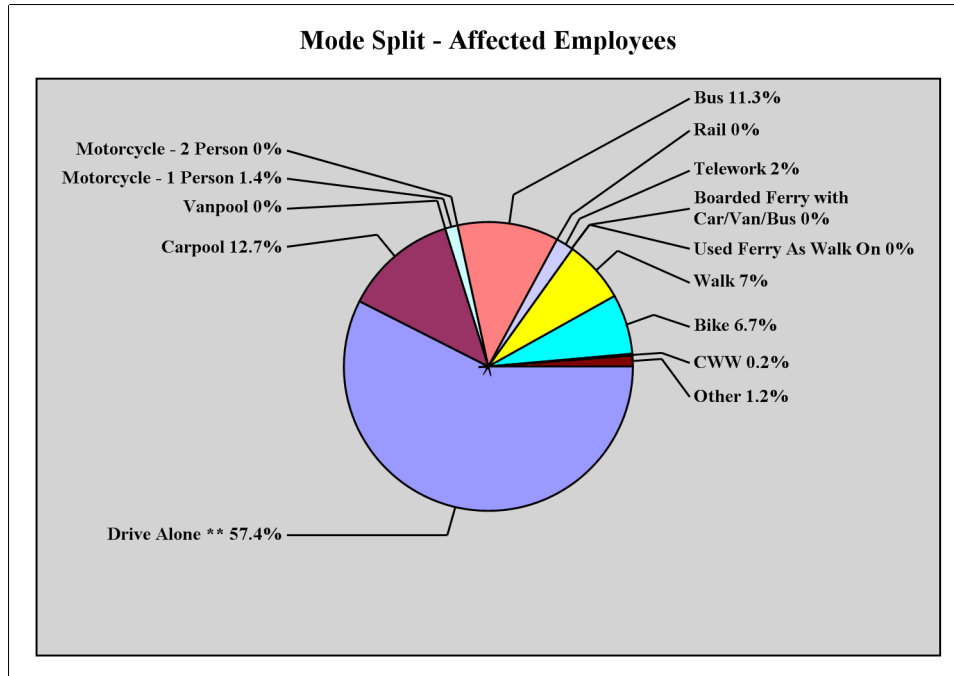
\* Mode shares in 2009/2010 survey are not entirely consistent with mode shares in 2007/08 survey since 2009/2010 survey included new modes (i.e. two ferry options)

\*\* Drive alone mode includes fill-in, where applicable.

Employer ID : E25213

### Commute Trips By Mode - Affected Employees \*

Q.4a: Last week, what type of transportation did you use each day to commute TO your usual work location? (Mode used for the longest distance.)



Mode	Trips During This Survey Week	% of Trips During This Survey Week	% of Trips During previous Survey Week	Employees Who Used This Mode At Least Once During This Survey Week	% of Employees Who Used This Mode At Least Once During This Survey Week	% of Employees Who Used This Mode at Least Once During previous Survey Week
Drive Alone **	2,704	57.4%	52.6%	625	65.6%	63.4%
Carpool	600	12.7%	14.9%	173	18.2%	21.7%
Vanpool	0	0%	0.2%	0	0%	0.3%
Motorcycle - 1 Person	64	1.4%	1.6%	16	1.7%	2.8%
Motorcycle - 2 Person	1	0%	0.1%	1	0.1%	0.3%
Bus	534	11.3%	12.8%	143	15%	16.7%
Rail	0	0%	0%	0	0%	0.1%
Telework	93	2%	2.4%	53	5.6%	6.7%
Boarded Ferry with Car/Van/Bus	0	0%	0%	0	0%	0%
Used Ferry As Walk On	0	0%	0%	0	0%	0%
Walk	332	7%	7.2%	85	8.9%	9.9%
Bike	316	6.7%	7%	81	8.5%	9.5%
CWW	8	0.2%	0.2%	6	0.6%	1%
Other	58	1.2%	0.8%	18	1.9%	1.5%

\* Mode shares in 2009/2010 survey are not entirely consistent with mode shares in 2007/08 survey since 2009/2010 survey included new modes (i.e. two ferry options).

\*\* Drive alone mode includes fill-in, where applicable.

Employer ID: E25213

**Alternative Modes - Number of Employees Who Used a Non-Drive Alone Mode:**

Non-Drive Alone Number Of Days	Exactly this # of Employees	Exactly this % of Employees	At least # of Employees	At least % of employees
0 Day	668	52%	1,295	100%
1 Days	60	5%	627	48%
2 Days	65	5%	567	44%
3 Days	56	4%	502	39%
4 Days	86	7%	446	34%
5 Days	323	25%	360	28%
6 or More Days	37	3%	37	3%

**Work Schedules By Group - All Employees (This table shows the relationship between work schedule and commute mode)**

Employees who worked:	Drive Alone 5 days / week		Drive Alone 3 or 4 days / week		Used Bus At Least 3 days / week		Carpooled At Least 3 days / week		Used Rail At Least 3 days / week		Vanpooled At Least 3 times / week		Biked or Walked At Least 3 Days / week		Used 'Other' Modes At Least 3 Days / week		Used Non-Drive Alone At Least 3 Days / week	
	#	%	#	%	#	%	#	%	#	%	#	%	#	%	#	%	#	%
5 days a week	492	45.1%	113	10.3%	132	12.1%	138	12.6%	0	0%	1	0.1%	141	12.9%	11	1%	442	40.5%
4 days a week (4/10s)	5	8.9%	28	50%	5	8.9%	4	7.1%	0	0%	0	0%	5	8.9%	0	0%	17	30.4%
3 days a week	0	0%	23	52.3%	2	4.5%	2	4.5%	0	0%	0	0%	5	11.4%	0	0%	10	22.7%
9 days in 2 weeks (9/80)	2	40%	2	40%	0	0%	0	0%	0	0%	0	0%	0	0%	0	0%	0	0%
7 days in 2 weeks	0	0%	1	50%	0	0%	0	0%	0	0%	0	0%	1	50%	0	0%	1	50%
Other	10	10.9%	23	25%	8	8.7%	4	4.3%	0	0%	0	0%	9	9.8%	4	4.3%	32	34.8%

Employer ID: E25213

### Count by Occupancy of Carpools, Vanpools, and Motorcycles

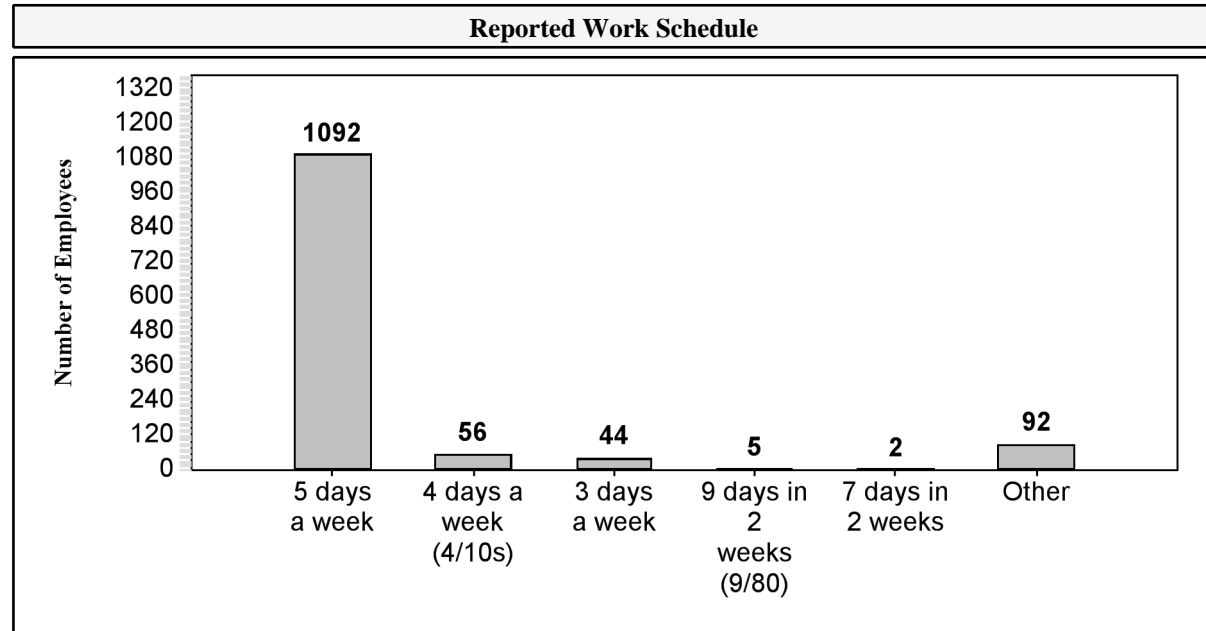
Q.4b If you used a carpool or vanpool as part of your commute, or if you ride a motorcycle, how many people (age 16 or older) are usually in the vehicle?

Ridesharing Occupancy	Mode	Response Count
1	Motorcycle	78
2	Motorcycle	2
2	Carpool	654
3	Carpool	63
4	Carpool	50
5	Carpool	1
>5	Carpool	0
<5	Vanpool	0
5	Vanpool	0
6	Vanpool	5
7	Vanpool	0
8	Vanpool	0
9	Vanpool	0
10	Vanpool	0
11	Vanpool	0
12	Vanpool	0
13	Vanpool	0
14	Vanpool	0
15	Vanpool	0

Employer ID: E25213

### Reported Work Schedule - All Employees

Q.5 Which of the following most fits your normal work schedule?



Reported Work Schedule	# Of Responses	% Of Employees
5 days a week	1,092	84.6%
4 days a week (4/10s)	56	4.3%
3 days a week	44	3.4%
9 days in 2 weeks (9/80)	5	0.4%
7 days in 2 weeks	2	0.2%
Other	92	7.1%

Employer ID: E25213

### Use Of Alternatives - Telework

Q.6b Employees who reported teleworking at least once in the previous two weeks, days teleworked in the last two weeks.

Number Of Days Teleworked	# Of Responses	% Of Total Employees
0	9	0.7%
1	38	2.9%
2	49	3.8%
3	17	1.3%
4	27	2.1%
5	6	0.5%
6	6	0.5%
7	4	0.3%
8	3	0.2%
9	0	0%
10	2	0.2%
Not Answered	1134	87.6%



Employer ID: E25213

### Distance to Work, Use of Ferries, Park-and-Ride lots or Paid Parking by All Employees

Q.7a. One-way, how many miles do you commute?

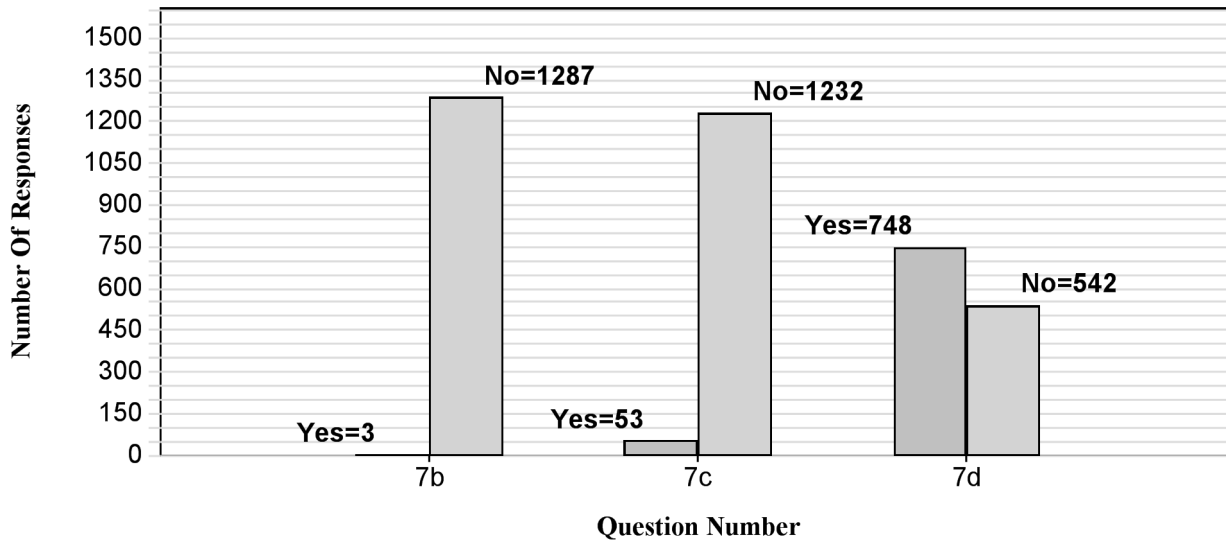
Average one-way distance home to work: 9.3 miles

Q.7b. Last week did you ride a ferry as part of your commute?

Q.7c. Last week did you use a park-and-ride lot as part of your commute?

Q.7d. Last week did you pay for parking as part of your commute?

**Ferry, Park-and-Ride, or Paid Parking**



Employer ID: E25213

### Preferred Incentives by All Employees

Q.9 If you drive alone to work, which of the following would most encourage you to try using an alternative to driving alone? (Respondents asked to select the three incentives most important to them.)

Preferred Incentive	# of Responses	% of all Responses
An employer-provided car for work purposes during work hours	90	5%
A financial subsidy for giving up your parking space	76	4.2%
More spaces at park-and-ride lots	7	0.4%
Lockers and showers for walkers and bicyclists	63	3.5%
On-site food service or kitchen facility	6	0.3%
on-site childcare, banking, dry cleaning, fitness center or other services	39	2.2%
Personalized help forming a carpool or vanpool	39	2.2%
Priority, reserved, or discounted parking for carpools and vanpools	36	2%
Secured, covered parking for your bicycle	29	1.6%
More information about commute alternatives	29	1.6%
Opportunity to work at home(telework)	272	15.1%
A financial incentive (allowance/subsidy) for using an alternative to driving alone	266	14.8%
Other:	215	11.9%
An immediate ride home in case of an emergency(guaranteed ride home)	190	10.5%
Personalized help finding bus times and routes	18	1%
More frequent bus service at the worksite	148	8.2%
A more flexible work schedule to meet carpools, vanpools, the bus,etc.	136	7.5%
Transportation during lunch or breaks for personal errands	134	7.4%
Improved security at park-and-ride lots	10	0.6%

Employer ID: E25213

### Likelihood of Trying Alternative Modes (Percentage of All Employees)

Q.10: How likely would you be to try the following ways of getting to work?

Mode	Do Now	Likely	Not Likely	Not an Option	# of Responses
<b>Carpool</b>	14.1%	17.2%	38.7%	18.2%	1143
<b>Vanpool</b>	0.1%	10.7%	46.7%	26.6%	1089
<b>Bus</b>	20.8%	27.4%	23.9%	18.4%	1171
<b>Train</b>	0.5%	3.4%	10.7%	68.8%	1080
<b>Bicycle</b>	13.1%	19.8%	25.5%	28.7%	1129
<b>Walking</b>	15.5%	13.6%	22.3%	35.1%	1121
<b>Telework</b>	9.9%	35.7%	10.5%	31.2%	1130
<b>CWW</b>	5.3%	38.5%	12.0%	31.7%	1133

### Employee Transit Use - All Employees

Q.11: Last week, how many one-way transit or walk-on ferry rides did you take on each listed below (for any purpose, not just getting to and from work)?

Trips / Week	Employees Making This Many Transit Trips in a Week	
	Ferry As Walk On	Other Transit
1	0	0
2	0	0
3	0	0
4	0	0
5	0	0
6	0	0
7	0	0
8	0	0
9	0	0
10	0	0
11 or more	0	0
<b># Of Employees using Transit</b>	0	0
<b>Total One-Way Transit Trips Per Week</b>	0	0

Employer ID : E25213

### Employee Transit Use - Affected Employees

Q.11: Last week, how many one-way transit or walk-on ferry rides did you take on each listed below (for any purpose, not just getting to and from work)?

Trips / Week	Employees Making This Many Transit Trips in a Week	
	Ferry As Walk On	Other Transit
1	0	0
2	0	0
3	0	0
4	0	0
5	0	0
6	0	0
7	0	0
8	0	0
9	0	0
10	0	0
11 or more	0	0
# Of Employees using Transit	0	0
Total One-Way Transit Trips Per Week	0	0

Employer ID: E25213

**Commute Mode By ZipCode for All Employees**

Q8. What is your home zip code?

Home Zip code	Total Employees	Employee Percentage	Weekly Count of Trips By Mode												
			Drive Alone	Carpool	Vanpool	Motorcycle	Bus	Train	Bike	Walk	Telework	CWW	Ferry (car/van/bus)	Ferry (walk-on)	Other
98225	463	35.78	861	233	0	32	371	0	271	405	53	5	0	0	0
98229	301	23.26	1006	157	0	24	131	0	80	28	36	3	0	0	0
98226	230	17.77	769	164	5	11	78	0	39	0	23	3	0	0	0
98248	68	5.26	226	58	0	0	35	0	0	0	2	0	0	0	0
98230	37	2.86	118	28	0	0	36	0	0	0	2	0	0	0	0
98264	30	2.32	101	9	0	11	20	0	0	0	1	1	0	0	0
98247	20	1.55	81	11	0	0	2	0	0	0	1	0	0	0	0
98284	18	1.39	60	16	0	1	3	0	0	0	0	1	0	0	0
98273	13	1.00	25	29	0	0	6	0	0	0	1	0	0	0	0
99999 (invalid)	12	0.93	26	3	0	0	0	0	0	0	0	0	0	0	0
98244	12	0.93	31	18	0	1	3	0	0	0	0	0	0	0	0
98221	11	0.85	43	0	0	0	0	0	1	0	0	0	0	0	0
98266	6	0.46	19	2	0	0	6	0	0	0	1	0	0	0	0
98233	5	0.39	13	5	0	0	3	0	0	0	0	0	0	0	0
98240	5	0.39	15	0	0	0	10	0	0	0	0	0	0	0	0
98274	5	0.39	10	11	0	0	0	0	0	0	2	0	0	0	0
98232	4	0.31	16	3	0	0	1	0	0	0	0	0	0	0	0
98223	4	0.31	10	6	0	0	3	0	0	0	0	0	0	0	0
98231	3	0.23	7	0	0	0	8	0	0	0	0	0	0	0	0
98227	3	0.23	10	0	0	0	0	0	0	5	0	0	0	0	0
98228	3	0.23	15	0	0	0	0	0	0	0	0	0	0	0	0
98277	3	0.23	9	0	0	0	0	0	0	0	1	0	0	0	0
98295	3	0.23	13	0	0	0	0	0	0	0	0	0	0	0	0
98106	2	0.15	2	5	0	0	0	0	0	0	0	0	0	0	0
98220	2	0.15	5	2	0	0	3	0	0	0	0	0	0	0	0
98012	2	0.15	3	2	0	0	0	0	0	0	5	0	0	0	0
98119	2	0.15	2	0	0	0	0	2	0	0	0	0	0	0	0
98122	1	0.08	5	0	0	0	0	0	0	0	0	0	0	0	0

Weekly Count of Trips By Mode															
Home Zip code	Total Employees	Employee Percentage	Drive Alone	Carpool	Vanpool	Motorcycle	Bus	Train	Bike	Walk	Telework	CWW	Ferry (car/van/bus)	Ferry (walk-on)	Other
98125	1	0.08	0	0	0	0	0	0	0	5	0	0	0	0	0
98133	1	0.08	1	0	0	0	0	0	0	0	0	0	0	0	0
98208	1	0.08	5	0	0	0	0	0	0	0	0	0	0	0	0
98034	1	0.08	2	0	0	0	0	0	0	0	3	0	0	0	0
98052	1	0.08	0	2	0	0	0	0	0	0	0	0	0	0	0
98072	1	0.08	0	0	0	0	1	0	0	0	0	0	0	0	0
98105	1	0.08	5	0	0	0	0	0	0	0	0	0	0	0	0
98007	1	0.08	0	0	0	0	0	0	0	0	0	0	0	0	0
98107	1	0.08	3	0	0	0	0	0	0	0	2	0	0	0	0
98112	1	0.08	3	0	0	0	0	0	0	0	0	0	0	0	0
98267	1	0.08	5	0	0	0	0	0	0	0	0	0	0	0	0
98271	1	0.08	5	0	0	0	0	0	0	0	0	0	0	0	0
98261	1	0.08	0	0	0	0	0	0	0	0	2	0	0	0	0
98262	1	0.08	5	0	0	0	0	0	0	0	0	0	0	0	0
98263	1	0.08	3	0	0	0	0	0	0	0	0	0	0	0	0
98311	1	0.08	5	0	0	0	0	0	0	0	0	0	0	0	0
98363	1	0.08	5	0	0	0	0	0	0	0	0	0	0	0	0
98374	1	0.08	1	0	0	0	0	0	0	0	0	0	0	0	0
98383	1	0.08	5	0	0	0	0	0	0	0	0	0	0	0	0
98686	1	0.08	3	0	0	0	0	0	0	0	2	0	0	0	0
98926	1	0.08	1	0	0	0	0	0	0	0	0	0	0	0	0
99218	1	0.08	0	4	0	0	0	0	1	0	0	0	0	0	0
98290	1	0.08	4	0	0	0	0	0	0	0	1	0	0	0	0
98292	1	0.08	5	0	0	0	0	0	0	0	0	0	0	0	0
98275	1	0.08	3	0	0	0	0	0	0	0	0	0	0	0	0
98276	1	0.08	5	0	0	0	0	0	0	0	0	0	0	0	0