

Western Washington University

2015 PARKING UTILIZATION STUDY

Prepared for:
Western Washington University

January 2016

Prepared by:



11730 118th Avenue NE, Suite 600
Kirkland, WA 98034-7120
Phone: 425-821-3665
Fax: 425-825-8434
www.transpogroup.com

Table of Contents

INTRODUCTION..... 1
 Methodology 1
 2015 COUNT SUMMARY 2
 LINCOLN CREEK PARK AND RIDE 6
 COUNT COMPARISON WITH PRIOR YEARS..... 7
 Parking Supply 7
 Occupancy Rates..... 7
 CONCLUSIONS 10

Figures

Figure 1. Campus Parking – Average Hourly Occupancy 2
 Figure 2. Campus Parking – Hourly Occupancy by Day of Week..... 3
 Figure 3. Average Weekday Hourly Occupancy by Parking Lot Type 4
 Figure 4. R Lots – Hourly Occupancy by Day of Week 4
 Figure 5. G Lots – Hourly Occupancy by Day of Week..... 5
 Figure 6. V/C Lots – Hourly Occupancy by Day of Week..... 5
 Figure 7. Lincoln Creek Park and Ride Daily Parking Utilization..... 6
 Figure 8. Average Weekday Parking Occupancy Rate Comparison 2006 – 2015 8
 Figure 9. Peak Hourly Occupancy Comparison (2006 – 2015)..... 8
 Figure 10. Weekday Average Evening Parking Occupancy Rate Comparison 9

Introduction

The purpose of this Western Washington University (WWU) Parking Utilization Study is to satisfy WWU's agreement with the City to monitor on-campus parking lot utilization rates over time. The study summarizes total campus parking supply and observed occupancy rates for the 2015 count, and also compares the 2015 data with historical data, available from the year 2000. New last year, the study of parking lot utilization at the Lincoln Creek Park and Ride was completed. Utilization associated with this lot has been provided in a separate section and is not included in the on-site analysis.

The total parking supply is defined as the number of available stalls within the study area. The study area includes all parking located on campus as well as campus owned parking lots off campus. A total of 3,433 stalls on campus were included in the survey for this study – designated loading and maintenance stalls were not surveyed. The study does not include motorcycle parking or off-campus parking that may occur on streets or in designated areas such as the Samish drive-in.

Parking occupancy rates are calculated in this report for an average weekday (average of Monday through Thursday observation days), for each individual weekday, for all parking lots and for individual parking lot types. A parking occupancy rate can be defined as the percentage of the parking supply that is observed to be occupied during a given time period. Parking occupancy is reported on an hourly basis.

Methodology

Parking occupancy data was collected for this study by a firm that specializes in traffic data collection. The campus was divided into three areas with three staff members assigned to individual routes through a given area, such that the same person collected data in the same area each day. The data collection staff began their designated routes each hour, on the hour, with counts beginning at 9:00 a.m. each day.

The 2015 parking counts were conducted during the week of November 16th, 2015, which has been identified by WWU as one of the busiest weeks during the school year. Counts were collected from 9:00 a.m. to 5:00 p.m. on Monday, Thursday, and Friday. Twelve-hour counts (9:00 a.m. to 9:00 p.m.) were conducted on Tuesday and Wednesday. Since class schedules often coincide on Mondays and Wednesdays, and again on Tuesdays and Thursdays, the evening counts on a Tuesday and Wednesday represent data from both potential evening class schedules.

Weather during the week of the study consisted of cool temperatures with periods of rain.

2015 Count Summary

Hourly parking occupancy counts for each individual parking lot on campus were observed during the week of November 16, 2015 and are tabulated by day of week in Appendix A. The total parking supply at the time of the counts (not including motorcycles) for this study was 3,433 stalls.

The day during which the highest parking occupancy was observed was Wednesday, November 18th. The peak hour of the day during which the highest occupancy was observed was 11:00 AM to 12:00 PM; 2,709 parking stalls were observed to be occupied, representing approximately 79 percent of the total parking capacity. The observation of 11:00 AM to 12:00 PM as the peak hour is consistent with observations made in previous years, and has historically occurred on a Wednesday. A more detailed comparison with historic data is presented later in this report.

Figures 1 through 6 summarize the results of the 2015 counts. Detailed count data is provided in Appendix A. Figure 1 shows the average weekday occupancy rate of all the parking lots studied (Monday through Friday). The peak occupancy at approximately 75 percent occurs during the 11:00 AM – 1:00 PM time period. During the evening from 5:00 PM to 9:00 PM, less than 50 percent of the stalls are occupied.

Figure 1. Campus Parking – Average Hourly Occupancy

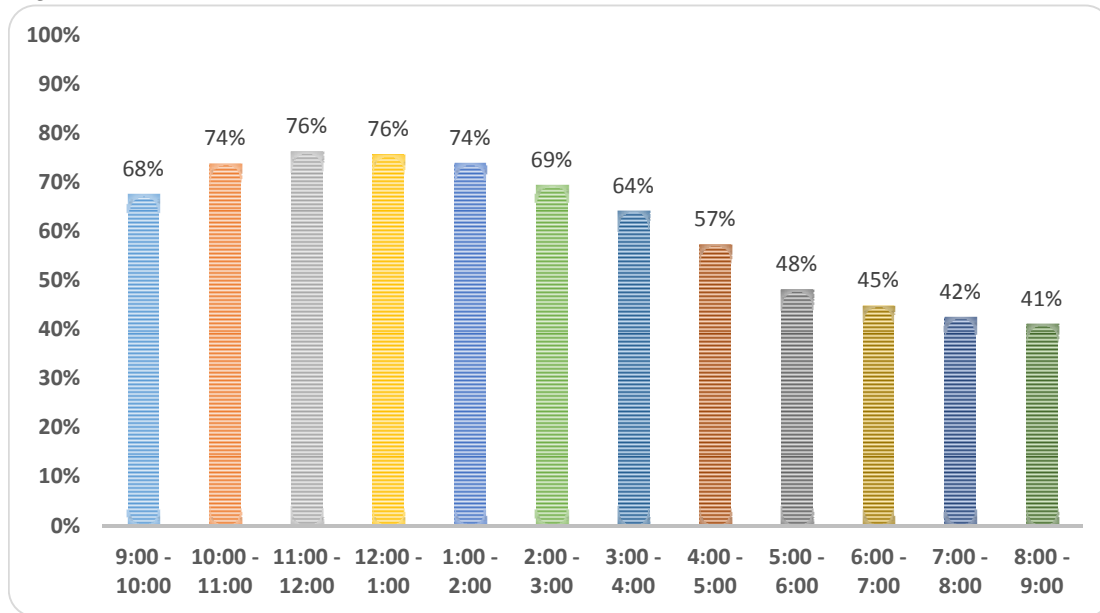


Figure 2 illustrates the parking occupancy rate by day of week. The peak hourly occupancy is observed between 11:00 AM to 1:00 PM on every day of the week. The graph illustrates that during that peak time Wednesday; approximately 76 percent of the total WWU campus parking lot supply was observed to be occupied. During the afternoon, after 4:00 p.m. the occupancy rates on Monday through Thursday were observed to be relatively similar. The occupancy rates observed on Friday were lower than other weekdays. During the evening hours observed on Tuesday and Wednesday, the occupancy rate remained below 50 percent.

Figure 2. Campus Parking – Hourly Occupancy by Day of Week

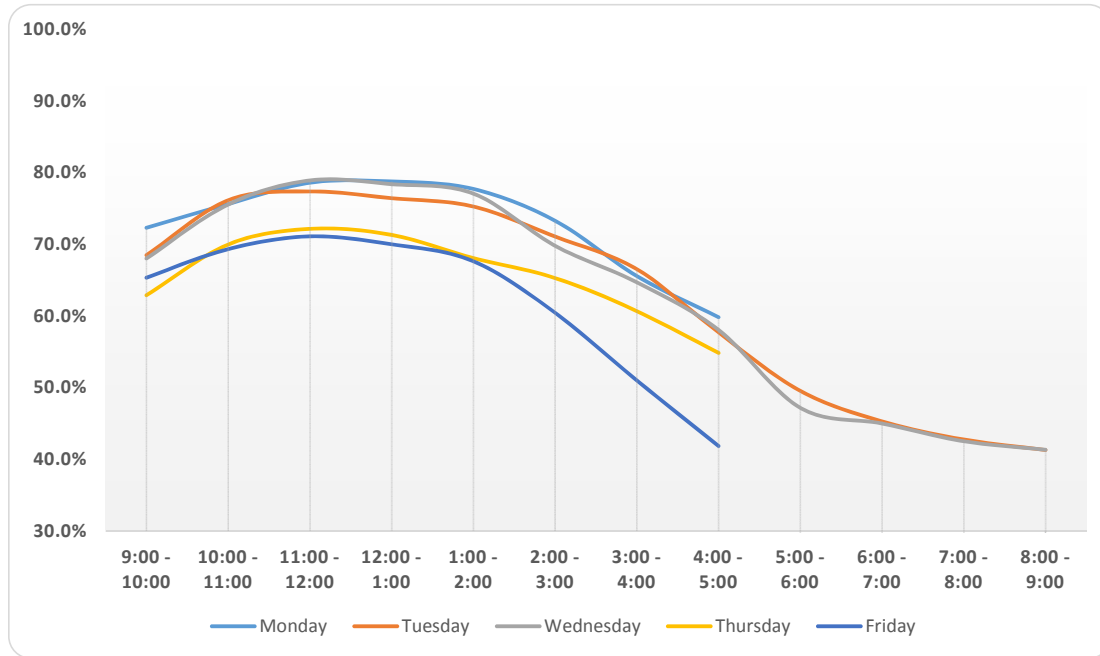
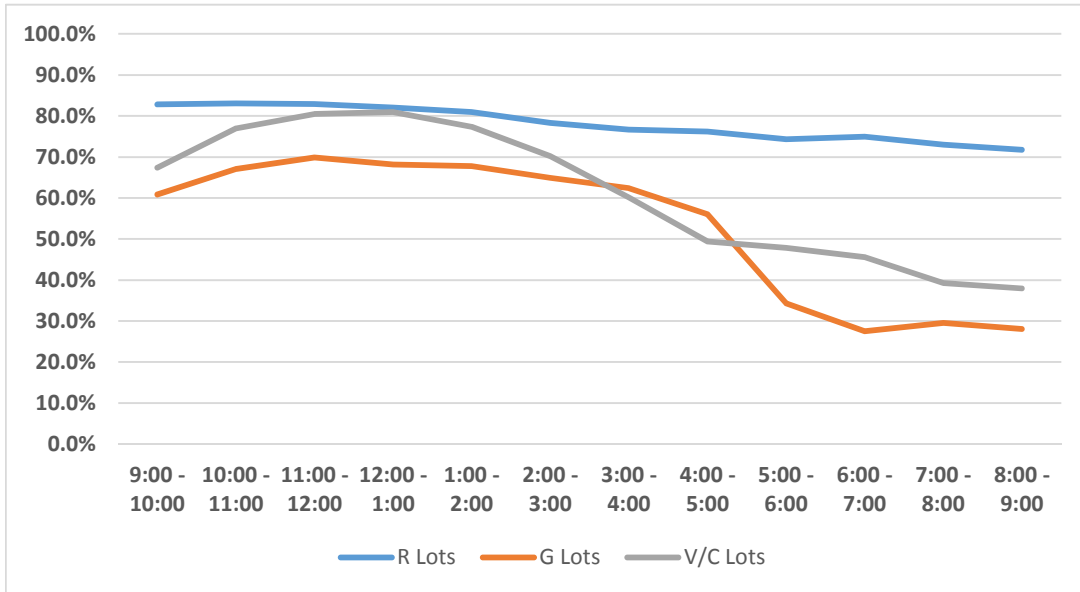


Figure 3 shows the average weekday parking occupancy by lot type - “R”, “G” and “V/C”. In general, R lots are designated for residential student permits, G lots are designated for staff and visitor permits are also sold to a few G lots, and V/C lots include assigned non-resident student parking and short-term visitor parking. As shown in Figure 3, all of the lot types are below 85 percent capacity. The R lots are occupied approximately 71 to 83 percent throughout the day, the G lots are occupied approximately 56 to 70 percent during the daytime hours (9:00 AM to 5:00 PM) and less than 35 percent during the evening hours (after 5:00 PM), and the V/C lots are occupied approximately 60 to 81 percent during the daytime hours (9:00 AM to 5:00 PM) and less than 50 percent during the evening hours (after 5:00 PM).

Figure 3. Average Weekday Hourly Occupancy by Parking Lot Type



Figures 4 through 6 display the observed occupancy by day of week for each lot type – R, G and V/C. Figure 4 shows observed hourly occupancy rates for R lots. Approximately 21 percent (732 stalls) of the campus parking supply is designated R. Observed occupancy rates in the R lots peaked at 86 percent during the week of observations.

Figure 4. R Lots – Hourly Occupancy by Day of Week

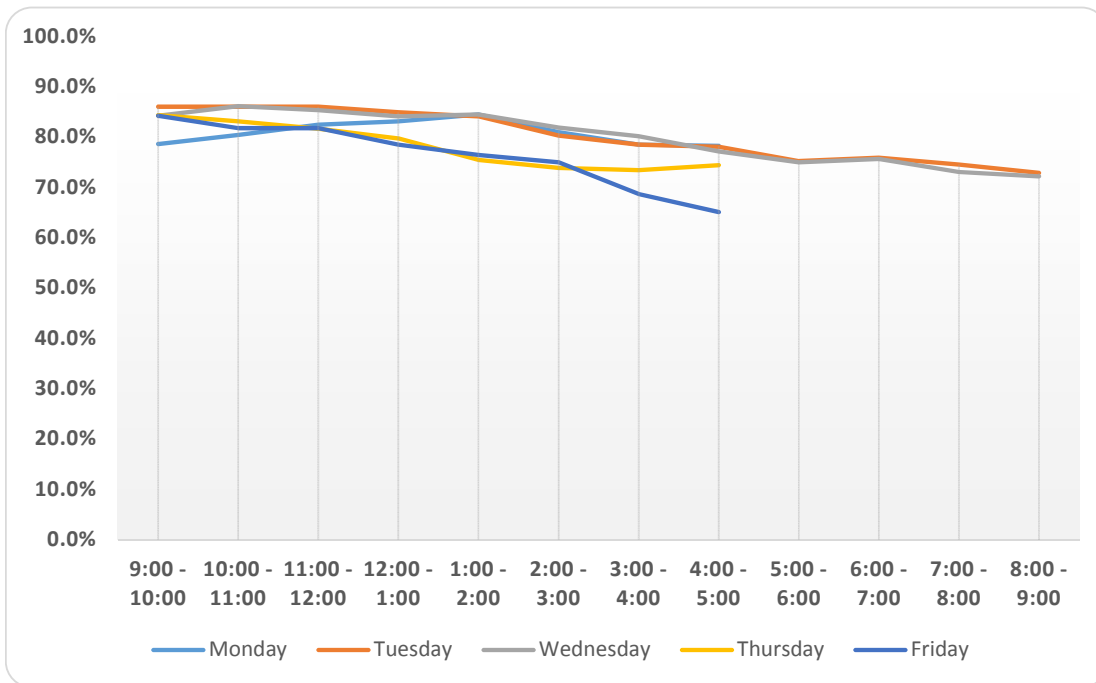


Figure 5 shows observed hourly occupancy rates for G lots. Approximately 35 percent of the campus parking supply (1,191 stalls) is allocated to the G lots. Observed occupancy rates in these lots do not exceed 73 percent on any of the observed days.

Figure 5. G Lots – Hourly Occupancy by Day of Week

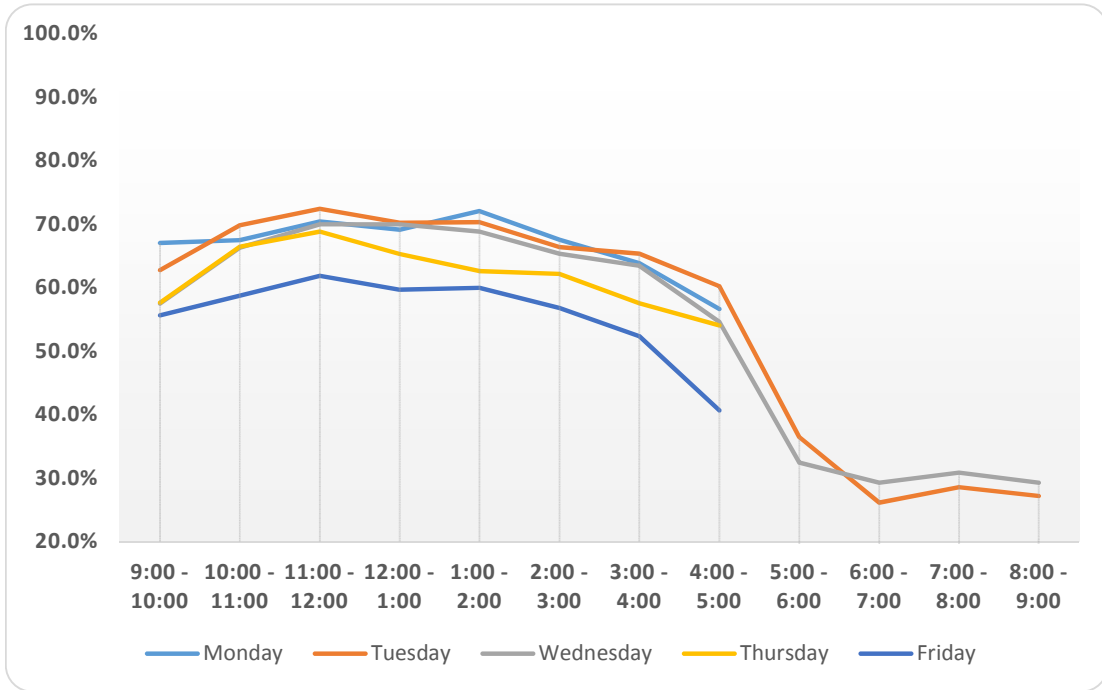
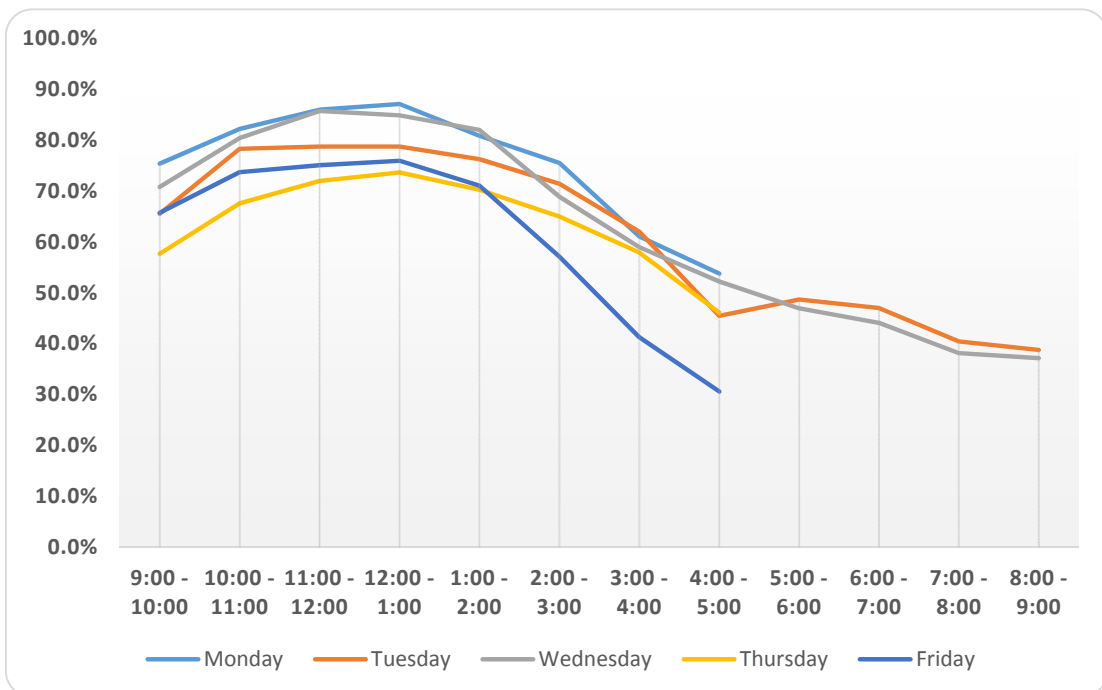


Figure 6 shows observed hourly occupancy rates for V/C lots. Approximately 41 percent of the campus parking supply (1,395 stalls) is allocated to V/C lots. Occupancy rates in these lots do not exceed 86 percent on any of the days observed.

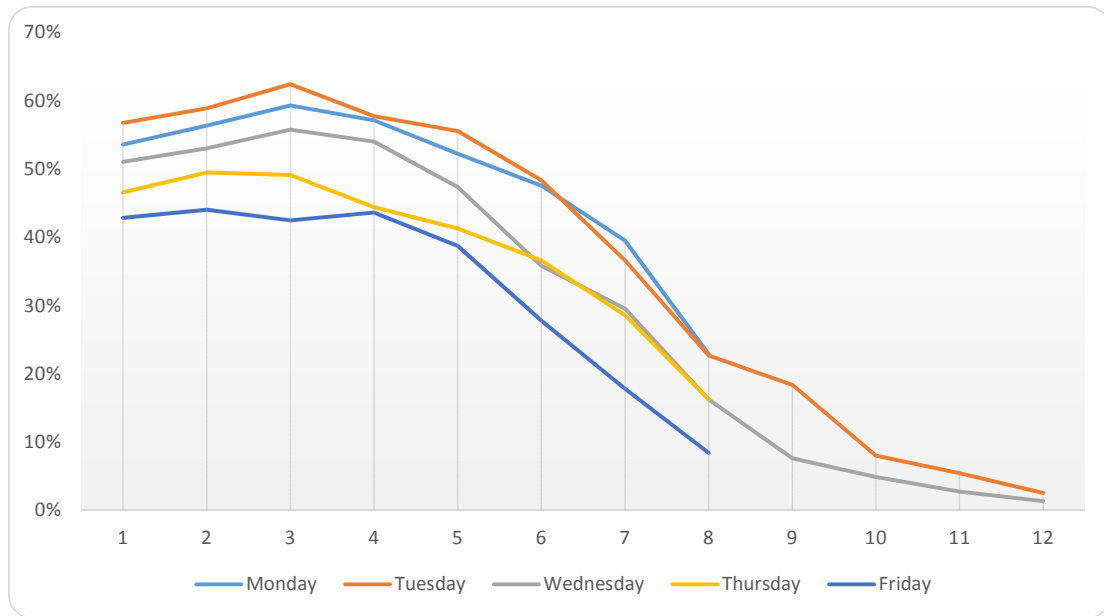
Figure 6. V/C Lots – Hourly Occupancy by Day of Week



Lincoln Creek Park and Ride

New this year, the Lincoln Creek Park and Ride lot was observed hourly, consistent with the on campus study. The parking occupancy counts were observed during the week of November 16, 2015 and are tabulated by day of week below. The total parking supply at the time of the counts was approximately 511 stalls. A summary of the observations and utilization is provided in Appendix B. Figure 7 shows the observed hourly occupancy rates. As shown in Figure 7, parking trends were similar for each day of the week with daytime utilization ranging between approximately 15 percent and 65 percent. Parking utilization was highest on Tuesday between 11:00 AM and 12:00 PM with approximately 62 percent parking utilization.

Figure 7. Lincoln Creek Park and Ride Daily Parking Utilization



Count Comparison with Prior Years

Comparative historical parking occupancy data has been collected at WWU since 2000. Changes in parking supply and in observed peak occupancy rates observed over the past 10 years are summarized in this section. Hourly occupancy is compared by day and lot type. Historic data is reported based on the *Western Washington University 2014 Parking Utilization Study* (The Transpo Group, Inc., January 2015).

Parking Supply

As the WWU campus has grown and changed over the years, the total parking supply has also fluctuated. The total campus parking supply by parking lot type for the previous ten years is shown in Table 1. A detailed breakdown of parking supply by type for each of the parking lots in the WWU campus for all years is included in the Appendix. Over this same time period, the resident and non-resident student populations at WWU have increased from approximately 11,000 in 2000 to over 15,000 full-time-equivalents. It is noteworthy that according to WTA, transit service and ridership has increased over this time period. WWU has also provided approximately 500 off-site parking stalls at Lincoln Creek Transportation Center (LCTC). Transit service from LCTC is provided by Whatcom Transportation Authority (WTA).

Table 2. Parking Supply Comparison

Lot Type	2006	2007	2008	2009	2010	2011	2012	2013	2014	2015
R	1,061	1,063	1,063	947	947	978	977	739	739	732
G	1,183	1,191	1,158	1,152	1,162	1,168	1,177	1,183	1,197	1,191
V/C Total	1,022	1,022	1,154	1,154	1,154	1,172	1,172	1,396	1,395	1,395
Misc.	113	110	100	121	119	125	112	113	124	115
Motorcycle	133	137	127	127	119	109	125	132	133	135
TOTAL	3,512	3,523	3,602	3,501	3,501	3,552	3,563	3,563	3,588	3,568

Occupancy Rates

The average weekday hourly occupancy rates for 2015 were summarized in Figure 1. Figure 8 compares the 2015 data with the previous ten years. The figure shows that the peak occupancy period has remained relatively constant over the 2006 – 2015 observation periods. The 2015 shows a small increase in occupancy rates as compared to last year, although are still lower than those observed in 2006. Since the parking supply has varied by year, comparisons are made based on rates, rather than actual number of stalls. All supporting data tables are provided in Appendix C.

Figure 8. Average Weekday Parking Occupancy Rate Comparison 2006 – 2015

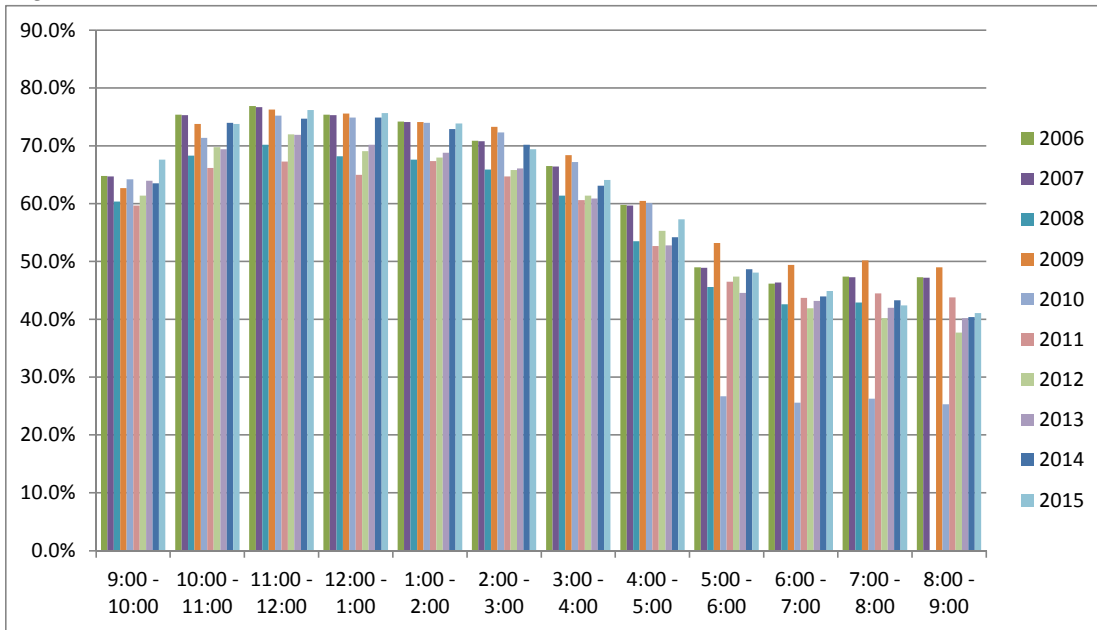
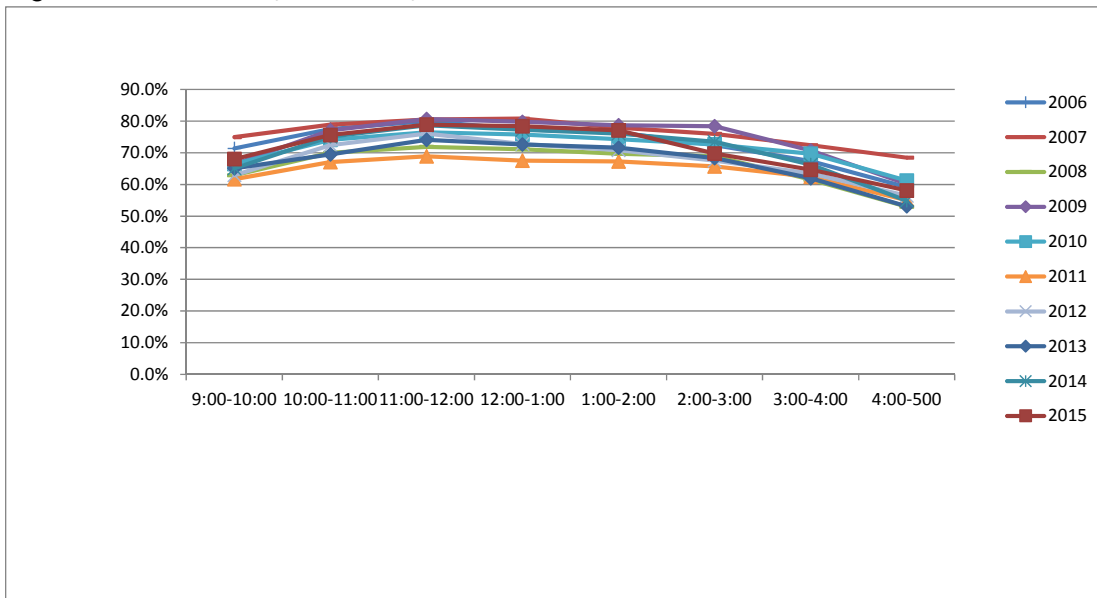


Figure 9 illustrates the hourly occupancy rates on the peak day, which has historically been on Wednesday. Evening data was not available for all years, so is not included. The peak observed parking occupancy rate on campus has declined over time from approximately 92 percent. In November 2015, the peak observed hourly occupancy rate is approximately 79 percent.

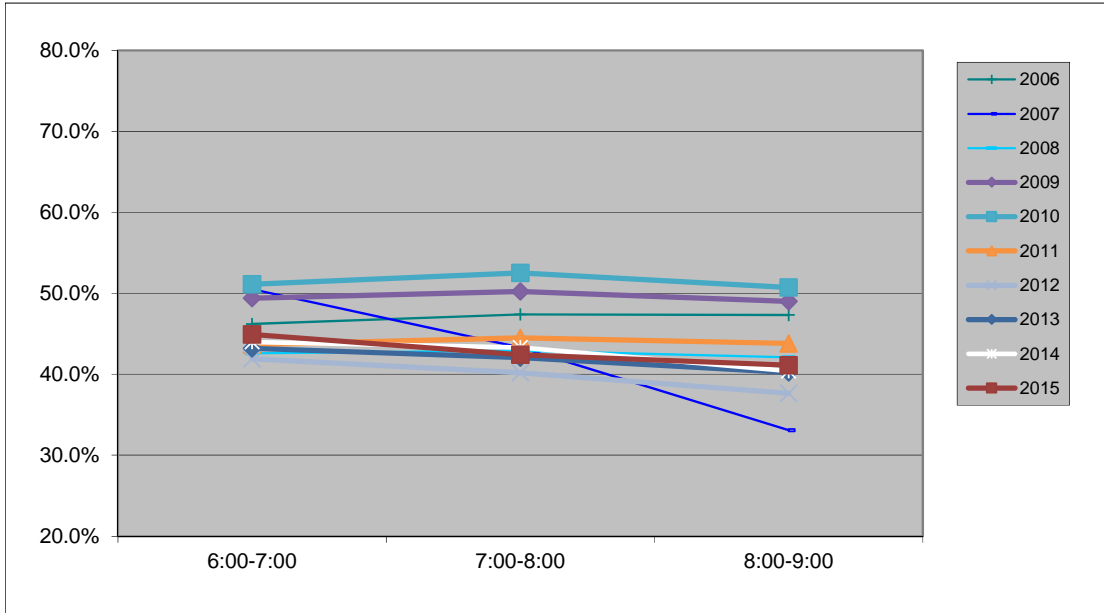
Figure 9. Peak Hourly Occupancy Comparison (2006 – 2015)



Figures 10 illustrates the average weekday evening occupancy rates for evening observation periods from the counts conducted since the year 2006. Counts have traditionally been collected on either a Monday or Wednesday and either a Tuesday or Thursday. The

Tuesday/Thursday data show a very slight trend of a higher occupancy by a few percent. Since the difference is minor, results for Monday/Wednesday data and Tuesday/Thursday data have been averaged and the corresponding weekday evening parking occupancy rates are shown in Figure 10. The figure shows that evening occupancy rates are less than 50 percent.

Figure 10. Weekday Average Evening Parking Occupancy Rate Comparison



Conclusions

The parking supply for WWU campus parking lots was observed to be occupied at a peak of approximately 79 percent during the 11:00 a.m. to 12:00 p.m. time period on Wednesday, November 18th, 2015. The data observed during the 2015 count exhibited trends that were higher than those observed over the last couple of years, but lower than historical observations dating back five to ten years.

Data tables for 2015 and prior year counts are provided in the Appendix. Individual lot occupancies can be found in these tables and may be used for future campus parking planning.

2015 WWU Parking Occupancy Data - Monday, November 16

Time Period Counted:		9:00 - 10:00		10:00 - 11:00		11:00 - 12:00		12:00 - 1:00		1:00 - 2:00		2:00 - 3:00		3:00 - 4:00		4:00 - 5:00		5:00 - 6:00		6:00 - 7:00		7:00 - 8:00		8:00 - 9:00	
Lot	2015 Capacity	Occupancy		Occupancy		Occupancy		Occupancy		Occupancy		Occupancy		Occupancy		Occupancy		Occupancy		Occupancy		Occupancy		Occupancy	
		Stalls	%	Stalls	%	Stalls	%	Stalls	%	Stalls	%	Stalls	%	Stalls	%	Stalls	%	Stalls	%	Stalls	%	Stalls	%	Stalls	%
1R	35	29	82.9%	28	80.0%	26	74.3%	24	68.6%	28	80.0%	26	74.3%	27	77.1%	27	77.1%								
3R	158	107	67.7%	129	81.6%	135	85.4%	137	86.7%	135	85.4%	133	84.2%	128	81.0%	130	82.3%								
4R	81	74	91.4%	77	95.1%	77	95.1%	78	96.3%	76	93.8%	74	91.4%	72	88.9%	65	80.2%								
15R	98	87	88.8%	91	92.9%	91	92.9%	88	89.8%	95	96.9%	86	87.8%	82	83.7%	84	85.7%								
18R	94	84	89.4%	86	91.5%	87	92.6%	82	87.2%	83	88.3%	81	86.2%	75	79.8%	74	78.7%								
20R	40	32	80.0%	32	80.0%	33	82.5%	34	85.0%	34	85.0%	33	82.5%	33	82.5%	30	75.0%								
27R	226	162	71.7%	145	64.2%	154	68.1%	165	73.0%	167	73.9%	159	70.4%	157	69.5%	162	71.7%								
R TOTAL	732	575	78.6%	588	80.3%	603	82.4%	608	83.1%	618	84.4%	592	80.9%	574	78.4%	572	78.1%								
5G	24	21	87.5%	21	87.5%	21	87.5%	17	70.8%	18	75.0%	18	75.0%	17	70.8%	17	70.8%								
7G	130	110	84.6%	109	83.8%	111	85.4%	110	84.6%	112	86.2%	111	85.4%	108	83.1%	93	71.5%								
8G	22	12	54.5%	13	59.1%	13	59.1%	13	59.1%	14	63.6%	15	68.2%	10	45.5%	9	40.9%								
10G	62	27	43.5%	22	35.5%	22	35.5%	22	35.5%	21	33.9%	19	30.6%	21	33.9%	20	32.3%								
11G	51	27	52.9%	27	52.9%	27	52.9%	36	70.6%	32	62.7%	30	58.8%	26	51.0%	24	47.1%	24	47.1%						
12A	245	184	75.1%	178	72.7%	195	79.6%	193	78.8%	200	81.6%	182	74.3%	173	70.6%	139	56.7%								
26 CP	17	11	64.7%	11	64.7%	15	88.2%	15	88.2%	17	100.0%	15	88.2%	13	76.5%	17	100.0%								
13A	31	12	38.7%	10	32.3%	9	29.0%	10	32.3%	12	38.7%	11	35.5%	14	45.2%	15	48.4%								
14G	123	94	76.4%	111	90.2%	115	93.5%	117	95.1%	117	95.1%	109	88.6%	98	79.7%	90	73.2%								
17G	131	100	76.3%	98	74.8%	105	80.2%	105	80.2%	104	79.4%	102	77.9%	94	71.8%	87	66.4%								
19G	92	82	89.1%	84	91.3%	82	89.1%	91	98.9%	92	100.0%	84	91.3%	82	89.1%	60	65.2%								
22G	20	12	60.0%	17	85.0%	13	65.0%	10	50.0%	17	85.0%	15	75.0%	12	60.0%	14	70.0%								
24G	106	46	43.4%	41	38.7%	47	44.3%	37	34.9%	45	42.5%	44	41.5%	45	42.5%	43	40.6%								
25G	17	9	52.9%	14	82.4%	16	94.1%	15	88.2%	15	88.2%	13	76.5%	13	76.5%	12	70.6%								
29G	8	2	25.0%	4	50.0%	4	50.0%	3	37.5%	5	62.5%	4	50.0%	4	50.0%	2	25.0%								
30G	6	5	83.3%	3	50.0%	3	50.0%	2	33.3%	3	50.0%	3	50.0%	3	50.0%	1	16.7%								
32G	82	36	43.9%	33	40.2%	26	31.7%	28	34.1%	30	36.6%	27	32.9%	23	28.0%	26	31.7%								
33G	24	8	33.3%	7	29.2%	5	20.8%	3	12.5%	6	25.0%	6	25.0%	5	20.8%	5	20.8%								
G TOTAL	1,191	798	67.0%	803	67.4%	838	70.4%	823	69.1%	858	72.0%	804	67.5%	760	63.8%	674	56.6%								
6V	56	26	46.4%	43	76.8%	42	75.0%	50	89.3%	41	73.2%	36	64.3%	31	55.4%	31	55.4%								
23V	26	10	38.5%	15	57.7%	11	42.3%	10	38.5%	9	34.6%	13	50.0%	20	76.9%	18	69.2%								
C (16CR)	1313	1016	77.4%	1089	82.9%	1148	87.3%	1155	88.0%	1078	82.1%	1004	76.5%	801	61.0%	701	53.4%								
V/C TOTAL	1,395	1,052	75.4%	1,147	82.2%	1,199	85.9%	1,215	87.1%	1,128	80.9%	1,053	75.5%	852	61.1%	750	53.8%								
Armory	20	10	50.0%	9	45.0%	10	50.0%	10	50.0%	10	50.0%	11	55.0%	8	40.0%	8	40.0%								
Edens Service Rd	3	3	100.0%	2	66.7%	2	66.7%	2	66.7%	2	66.7%	2	66.7%	3	100.0%	1	33.3%								
CBS	15	1	6.7%	2	13.3%	3	20.0%	2	13.3%	3	20.0%	4	26.7%	2	13.3%	1	6.7%								
ALUMNI HOUSE	2	0	0.0%	1	50.0%	0	0.0%	0	0.0%	0	0.0%	0	0.0%	0	0.0%	1	50.0%								
Arntzen Ramp	3	2	66.7%	2	66.7%	3	100.0%	3	100.0%	2	66.7%	3	100.0%	2	66.7%	0	0.0%								
Bond Hall	7	1	14.3%	3	42.9%	3	42.9%	3	42.9%	3	42.9%	2	28.6%	2	28.6%	2	28.6%								
Fairhaven Service Rd	5	2	40.0%	3	60.0%	2	40.0%	2	40.0%	1	20.0%	2	40.0%	3	60.0%	5	100.0%								
Fuel Dock	7	5	71.4%	5	71.4%	5	71.4%	5	71.4%	7	100.0%	7	100.0%	7	100.0%	4	57.1%								
Nash Turnaround	3	0	0.0%	0	0.0%	0	0.0%	0	0.0%	0	0.0%	0	0.0%	1	33.3%	2	66.7%								
Viking Union Service Rd	3	3	100.0%	3	100.0%	3	100.0%	3	100.0%	3	100.0%	2	66.7%	1	33.3%	1	33.3%								
Art Annex	2	2	100.0%	2	100.0%	2	100.0%	2	100.0%	2	100.0%	2	100.0%	2	100.0%	2	100.0%								
Ridgeway Service Road	2	2	100.0%	2	100.0%	0	0.0%	2	100.0%	1	50.0%	1	50.0%	2	100.0%	1	50.0%								
VU Dock/VU SRV/Alley	3	0	0.0%	0	0.0%	0	0.0%	0	0.0%	1	33.3%	1	33.3%	1	33.3%	0	0.0%								
Bio Green House	3	1	33.3%	0	0.0%	0	0.0%	1	33.3%	1	33.3%	1	33.3%	0	0.0%	0	0.0%								
ARCHIVES	0	0	0.0%	0	0.0%	0	0.0%	0	0.0%	0	0.0%	0	0.0%	0	0.0%	0	0.0%								
AIC	17	5	29.4%	4	23.5%	4	23.5%	3	17.6%	8	47.1%	9	52.9%	11	64.7%	10	58.8%								
Engineering	20	20	100.0%	20	100.0%	20	100.0%	20	100.0%	20	100.0%	20	100.0%	20	100.0%	20	100.0%								
MISC TOTAL	115	57	49.6%	58	50.4%	58	50.4%	58	50.4%	64	55.7%	67	58.3%	65	56.5%	58	50.4%								
TOTAL	3,433	2,482	72.3%	2,596	75.6%	2,698	78.6%	2,704	78.8%	2,668	77.7%	2,516	73.3%	2,251	65.6%	2,054	59.8%								

Note: Campus Services removed because it is located in a secured garage

2015 WWU Parking Occupancy Data - Tuesday, November 17

Time Period Counted:		9:00 - 10:00		10:00 - 11:00		11:00 - 12:00		12:00 - 1:00		1:00 - 2:00		2:00 - 3:00		3:00 - 4:00		4:00 - 5:00		5:00 - 6:00		6:00 - 7:00		7:00 - 8:00		8:00 - 9:00	
Lot	2015 Capacity	Occupancy Stalls	%	Occupancy Stalls	%	Occupancy Stalls	%	Occupancy Stalls	%	Occupancy Stalls	%	Occupancy Stalls	%	Occupancy Stalls	%	Occupancy Stalls	%	Occupancy Stalls	%	Occupancy Stalls	%	Occupancy Stalls	%	Occupancy Stalls	%
1R	35	27	77.1%	27	77.1%	27	77.1%	27	77.1%	25	71.4%	24	68.6%	26	74.3%	29	82.9%	26	74.3%	28	80.0%	27	77.1%	25	71.4%
3R	158	131	82.9%	137	86.7%	132	83.5%	131	82.9%	131	82.9%	123	77.8%	123	77.8%	110	69.6%	118	74.7%	118	74.7%	118	74.7%	117	74.1%
4R	81	75	92.6%	74	91.4%	73	90.1%	74	91.4%	74	91.4%	70	86.4%	70	86.4%	64	79.0%	64	79.0%	65	80.2%	65	80.2%	63	77.8%
15R	98	97	99.0%	90	91.8%	90	91.8%	90	91.8%	90	91.8%	91	92.9%	83	84.7%	86	87.8%	84	85.7%	86	87.8%	88	89.8%	92	93.9%
18R	94	83	88.3%	84	89.4%	84	89.4%	82	87.2%	79	84.0%	77	81.9%	74	78.7%	72	76.6%	75	79.8%	74	78.7%	72	76.6%	69	73.4%
20R	40	39	97.5%	38	95.0%	38	95.0%	37	92.5%	35	87.5%	34	85.0%	33	82.5%	32	80.0%	35	87.5%	33	82.5%	33	82.5%	34	85.0%
27R	226	177	78.3%	179	79.2%	185	81.9%	180	79.6%	181	80.1%	168	74.3%	165	73.0%	172	76.1%	148	65.5%	152	67.3%	142	62.8%	133	58.8%
R TOTAL	732	629	85.9%	629	85.9%	629	85.9%	621	84.8%	615	84.0%	587	80.2%	574	78.4%	571	78.0%	550	75.1%	555	75.8%	545	74.5%	533	72.8%
5G	24	21	87.5%	21	87.5%	24	100.0%	20	83.3%	20	83.3%	21	87.5%	20	83.3%	14	58.3%	9	37.5%	4	16.7%	6	25.0%	5	20.8%
7G	130	107	82.3%	118	90.8%	115	88.5%	110	84.6%	113	86.9%	111	85.4%	98	75.4%	89	68.5%	51	39.2%	23	17.7%	20	15.4%	18	13.8%
8G	22	15	68.2%	15	68.2%	16	72.7%	17	77.3%	18	81.8%	17	77.3%	15	68.2%	16	72.7%	10	45.5%	1	4.5%	1	4.5%	1	4.5%
10G	62	18	29.0%	22	35.5%	23	37.1%	19	30.6%	20	32.3%	17	27.4%	18	29.0%	16	25.8%	8	12.9%	1	1.6%	3	4.8%	3	4.8%
11G	51	29	56.9%	33	64.7%	40	78.4%	34	66.7%	30	58.8%	25	49.0%	40	78.4%	35	68.6%	30	58.8%	36	70.6%	45	88.2%	44	86.3%
12A	245	152	62.0%	163	66.5%	171	69.8%	186	75.9%	181	73.9%	176	71.8%	170	69.4%	158	64.5%	96	39.2%	78	31.8%	65	26.5%	60	24.5%
26 CP	17	12	70.6%	13	76.5%	14	82.4%	14	82.4%	14	82.4%	15	88.2%	16	94.1%	17	100.0%	17	100.0%	16	94.1%	17	100.0%	17	100.0%
13A	31	14	45.2%	13	41.9%	14	45.2%	12	38.7%	13	41.9%	12	38.7%	13	41.9%	14	45.2%	1	3.2%	1	3.2%	0	0.0%	0	0.0%
14G	123	96	78.0%	117	95.1%	121	98.4%	121	98.4%	117	95.1%	111	90.2%	104	84.6%	86	69.9%	56	45.5%	31	25.2%	53	43.1%	60	48.8%
17G	131	93	71.0%	106	80.9%	111	84.7%	104	79.4%	109	83.2%	97	74.0%	99	75.6%	93	71.0%	51	38.9%	41	31.3%	56	42.7%	48	36.6%
19G	92	76	82.6%	90	97.8%	91	98.9%	91	98.9%	85	92.4%	82	89.1%	76	82.6%	70	76.1%	59	64.1%	44	47.8%	40	43.5%	35	38.0%
22G	20	13	65.0%	14	70.0%	16	80.0%	15	75.0%	13	65.0%	12	60.0%	15	75.0%	14	70.0%	5	25.0%	9	45.0%	8	40.0%	6	30.0%
24G	106	45	42.5%	45	42.5%	48	45.3%	38	35.8%	47	44.3%	42	39.6%	44	41.5%	47	44.3%	9	8.5%	4	3.8%	4	3.8%	4	3.8%
25G	17	14	82.4%	15	88.2%	13	76.5%	13	76.5%	12	70.6%	13	76.5%	14	82.4%	12	70.6%	9	52.9%	4	23.5%	7	41.2%	9	52.9%
29G	8	1	12.5%	3	37.5%	3	37.5%	2	25.0%	4	50.0%	1	12.5%	2	25.0%	2	25.0%	0	0.0%	2	25.0%	2	25.0%	1	12.5%
30G	6	2	33.3%	2	33.3%	2	33.3%	2	33.3%	2	33.3%	1	16.7%	1	16.7%	2	33.3%	2	33.3%	3	50.0%	3	50.0%	3	50.0%
32G	82	34	41.5%	34	41.5%	33	40.2%	30	36.6%	29	35.4%	28	34.1%	26	31.7%	27	32.9%	19	23.2%	12	14.6%	8	9.8%	7	8.5%
33G	24	5	20.8%	7	29.2%	7	29.2%	8	33.3%	10	41.7%	9	37.5%	7	29.2%	5	20.8%	2	8.3%	2	8.3%	2	8.3%	2	8.3%
G TOTAL	1,191	747	62.7%	831	69.8%	862	72.4%	836	70.2%	837	70.3%	790	66.3%	778	65.3%	717	60.2%	434	36.4%	311	26.1%	340	28.5%	323	27.1%
6V	56	31	55.4%	51	91.1%	51	91.1%	48	85.7%	50	89.3%	43	76.8%	41	73.2%	25	44.6%	27	48.2%	22	39.3%	31	55.4%	33	58.9%
23V	26	7	26.9%	15	57.7%	16	61.5%	14	53.8%	16	61.5%	20	76.9%	17	65.4%	12	46.2%	8	30.8%	4	15.4%	3	11.5%	9	34.6%
C (16CR)	1313	876	66.7%	1026	78.1%	1031	78.5%	1036	78.9%	998	76.0%	933	71.1%	807	61.5%	597	45.5%	644	49.0%	630	48.0%	530	40.4%	499	38.0%
V/C TOTAL	1,395	914	65.5%	1,092	78.3%	1,098	78.7%	1,098	78.7%	1,064	76.3%	996	71.4%	865	62.0%	634	45.4%	679	48.7%	656	47.0%	564	40.4%	541	38.8%
Armory	20	10	50.0%	10	50.0%	11	55.0%	12	60.0%	12	60.0%	12	60.0%	12	60.0%	10	50.0%	9	45.0%	9	45.0%	6	30.0%	6	30.0%
Edens Service Rd	3	3	100.0%	3	100.0%	3	100.0%	3	100.0%	3	100.0%	3	100.0%	1	33.3%	1	33.3%	0	0.0%	1	33.3%	1	33.3%	1	33.3%
CBS	15	1	6.7%	1	6.7%	3	20.0%	5	33.3%	5	33.3%	4	26.7%	4	26.7%	3	20.0%	2	13.3%	1	6.7%	1	6.7%	1	6.7%
ALUMNI HOUSE	2	1	50.0%	1	50.0%	1	50.0%	2	100.0%	2	100.0%	2	100.0%	1	50.0%	0	0.0%	0	0.0%	1	50.0%	0	0.0%	1	50.0%
Arntzen Ramp	3	1	33.3%	2	66.7%	1	33.3%	2	66.7%	1	33.3%	1	33.3%	0	0.0%	0	0.0%	1	33.3%	0	0.0%	0	0.0%	0	0.0%
Bond Hall	7	6	85.7%	5	71.4%	5	71.4%	3	42.9%	2	28.6%	1	14.3%	1	14.3%	1	14.3%	3	42.9%	5	71.4%	3	42.9%	3	42.9%
Fairhaven Service Rd	5	0	0.0%	1	20.0%	0	0.0%	0	0.0%	2	40.0%	1	20.0%	2	40.0%	0	0.0%	1	20.0%	0	0.0%	0	0.0%	0	0.0%
Fuel Dock	7	7	100.0%	7	100.0%	6	85.7%	6	85.7%	7	100.0%	7	100.0%	7	100.0%	6	85.7%	3	42.9%	1	14.3%	0	0.0%	0	0.0%
Nash Turnaround	3	0	0.0%	0	0.0%	0	0.0%	0	0.0%	0	0.0%	0	0.0%	0	0.0%	0	0.0%	0	0.0%	3	100.0%	0	0.0%	1	33.3%
Viking Union Service Rd	3	3	100.0%	3	100.0%	3	100.0%	3	100.0%	3	100.0%	3	100.0%	3	100.0%	3	100.0%	1	33.3%	2	66.7%	1	33.3%	3	100.0%
Art Annex	2	2	100.0%	2	100.0%	2	100.0%	2	100.0%	2	100.0%	2	100.0%	2	100.0%	1	50.0%	1	50.0%	1	50.0%	1	50.0%	1	50.0%
Ridgeway Service Road	2	1	50.0%	2	100.0%	2	100.0%	2	100.0%	2	100.0%	2	100.0%	2	100.0%	2	100.0%	1	50.0%	1	50.0%	0	0.0%	0	0.0%
VU Dock/VU SRV/Alley	3	0	0.0%	0	0.0%	0	0.0%	0	0.0%	0	0.0%	0	0.0%	0	0.0%	0	0.0%	0	0.0%	0	0.0%	0	0.0%	0	0.0%
Bio Green House	3	2	66.7%	2	66.7%	3	100.0%	0	0.0%	0	0.0%	2	66.7%	1	33.3%	1	33.3%	0	0.0%	1	33.3%	1	33.3%	1	33.3%
ARCHIVES	0	0	0.0%	0	0.0%	0	0.0%	0	0.0%	0	0.0%	0	0.0%	0	0.0%	0	0.0%	0	0.0%	0	0.0%	0	0.0%	0	0.0%
AIC	17	5	29.4%	3	17.6%	7	41.2%	10	58.8%	7	41.2%	7	41.2%	14	82.4%	13	76.5%	6	35.3%	2	11.8%	2	11.8%	1	5.9%
Engineering	20	19	95.0%	20	100.0%	20	100.0%	19	95.0%	20	100.0%	20	100.0%	17	85.0%	18	90.0%	10	50.0%	5	25.0%	3	15.0%	2	10.0%
MISC TOTAL	115	61	53.0%	62	53.9%	67	58.3%	69	60.0%	68	59.1%	67	58.3%	67	58.3%	59	51.3%	38	33.0%	33	28.7%	19	16.5%	21	18.3%
TOTAL	3,433	2,351	68.5%	2,614	76.1%	2,656	77.4%	2,624	76.4%	2,584	75.3%	2,440	71.1%	2,284	66.5%	1,981	57.7%	1,701	49.5%	1,555	45.3%	1,468	42.8%	1,418	41.3%

2015 WWU Parking Occupancy Data - Wednesday, November 18

Time Period Counted:		9:00 - 10:00		10:00 - 11:00		11:00 - 12:00		12:00 - 1:00		1:00 - 2:00		2:00 - 3:00		3:00 - 4:00		4:00 - 5:00		5:00 - 6:00		6:00 - 7:00		7:00 - 8:00		8:00 - 9:00	
Lot	2015 Capacity	Occupancy Stalls	Occupancy %	Occupancy Stalls	Occupancy %	Occupancy Stalls	Occupancy %	Occupancy Stalls	Occupancy %	Occupancy Stalls	Occupancy %	Occupancy Stalls	Occupancy %	Occupancy Stalls	Occupancy %	Occupancy Stalls	Occupancy %	Occupancy Stalls	Occupancy %	Occupancy Stalls	Occupancy %	Occupancy Stalls	Occupancy %	Occupancy Stalls	Occupancy %
1R	35	28	80.0%	28	80.0%	29	82.9%	28	80.0%	29	82.9%	26	74.3%	29	82.9%	27	77.1%	27	77.1%	24	68.6%	23	65.7%	22	62.9%
3R	158	132	83.5%	136	86.1%	137	86.7%	131	82.9%	139	88.0%	133	84.2%	128	81.0%	118	74.7%	110	69.6%	115	72.8%	114	72.2%	115	72.8%
4R	81	76	93.8%	78	96.3%	76	93.8%	75	92.6%	70	86.4%	73	90.1%	69	85.2%	69	85.2%	69	85.2%	62	76.5%	63	77.8%	64	79.0%
15R	98	87	88.8%	86	87.8%	86	87.8%	87	88.8%	90	91.8%	84	85.7%	81	82.7%	79	80.6%	80	81.6%	88	89.8%	82	83.7%	79	80.6%
18R	94	81	86.2%	83	88.3%	84	89.4%	80	85.1%	85	90.4%	83	88.3%	81	86.2%	75	79.8%	71	75.5%	73	77.7%	73	77.7%	76	80.9%
20R	40	39	97.5%		97.5%	38	95.0%	37	92.5%	37	92.5%		87.5%	34	85.0%	34	85.0%	31	77.5%	32	80.0%	32	80.0%	30	75.0%
27R	226	173	76.5%	180	79.6%	174	77.0%	177	78.3%	168	74.3%	165	73.0%	164	72.6%	162	71.7%	160	70.8%	159	70.4%	147	65.0%	142	62.8%
R TOTAL	732	616	84.2%	630	86.1%	624	85.2%	615	84.0%	618	84.4%	599	81.8%	586	80.1%	564	77.0%	548	74.9%	553	75.5%	534	73.0%	528	72.1%
5G	24	18	75.0%	20	83.3%	22	91.7%	20	83.3%	18	75.0%	20	83.3%	21	87.5%	16	66.7%	10	41.7%	6	25.0%	11	45.8%	13	54.2%
7G	130	102	78.5%	119	91.5%	117	90.0%	113	86.9%	110	84.6%	102	78.5%	95	73.1%	87	66.9%	42	32.3%	23	17.7%	22	16.9%	18	13.8%
8G	22	15	68.2%	12	54.5%	12	54.5%	8	36.4%	8	36.4%	11	50.0%	11	50.0%	10	45.5%	8	36.4%	3	13.6%	2	9.1%	1	4.5%
10G	62	16	25.8%	20	32.3%	18	29.0%	19	30.6%	16	25.8%	17	27.4%	17	27.4%	15	24.2%	13	21.0%	6	9.7%	4	6.5%	3	4.8%
11G	51	32	62.7%	32	62.7%	34	66.7%	31	60.8%	24	47.1%	26	51.0%	30	58.8%	25	49.0%	33	64.7%	41	80.4%	42	82.4%	39	76.5%
12A	245	143	58.4%	170	69.4%	185	75.5%	198	80.8%	189	77.1%	167	68.2%	161	65.7%	129	52.7%	77	31.4%	71	29.0%	66	26.9%	58	23.7%
26 CP	17	10	58.8%	11	64.7%	11	64.7%	13	76.5%	13	76.5%	11	64.7%	11	64.7%	14	82.4%	16	94.1%	14	82.4%	16	94.1%	16	94.1%
13A	31	15	48.4%	14	45.2%	12	38.7%	11	35.5%	11	35.5%	12	38.7%	13	41.9%	15	48.4%	2	6.5%	2	6.5%	1	3.2%	1	3.2%
14G	123	90	73.2%	97	78.9%	113	91.9%	114	92.7%	116	94.3%	109	88.6%	104	84.6%	86	69.9%	37	30.1%	39	31.7%	56	45.5%	47	38.2%
17G	131	63	48.1%	103	78.6%	104	79.4%	113	86.3%	110	84.0%	102	77.9%	100	76.3%	91	69.5%	54	41.2%	58	44.3%	57	43.5%	59	45.0%
19G	92	73	79.3%	78	84.8%	86	93.5%	90	97.8%	93	101.1%	91	98.9%	76	82.6%	69	75.0%	55	59.8%	52	56.5%	56	60.9%	57	62.0%
22G	20	11	55.0%	13	65.0%	16	80.0%	14	70.0%	14	70.0%	15	75.0%	19	95.0%	13	65.0%	6	30.0%	8	40.0%	7	35.0%	7	35.0%
24G	106	49	46.2%	48	45.3%	47	44.3%	38	35.8%	44	41.5%	43	40.6%	42	39.6%	35	33.0%	5	4.7%	4	3.8%	4	3.8%	3	2.8%
25G	17	9	52.9%	9	52.9%	14	82.4%	15	88.2%	15	88.2%	13	76.5%	13	76.5%	8	47.1%	7	41.2%	5	29.4%	7	41.2%	8	47.1%
29G	8	2	25.0%	4	50.0%	7	87.5%	4	50.0%	5	62.5%	2	25.0%	3	37.5%	2	25.0%	0	0.0%	1	12.5%	1	12.5%	1	12.5%
30G	6	2	33.3%	2	33.3%	2	33.3%	2	33.3%	2	33.3%	2	33.3%	2	33.3%	1	16.7%	0	0.0%	1	16.7%	1	16.7%	1	16.7%
32G	82	27	32.9%	31	37.8%	28	34.1%	26	31.7%	24	29.3%	27	32.9%	30	36.6%	29	35.4%	18	22.0%	11	13.4%	10	12.2%	11	13.4%
33G	24	7	29.2%	6	25.0%	5	20.8%	4	16.7%	7	29.2%	8	33.3%	7	29.2%	5	20.8%	3	12.5%	3	12.5%	3	12.5%	5	20.8%
G TOTAL	1,191	684	57.4%	789	66.2%	833	69.9%	833	69.9%	819	68.8%	778	65.3%	755	63.4%	650	54.6%	386	32.4%	348	29.2%	367	30.8%	348	29.2%
6V	56	7	12.5%	6	10.7%	10	17.9%	32	57.1%	43	76.8%	31	55.4%	29	51.8%	31	55.4%	22	39.3%	30	53.6%	33	58.9%	35	62.5%
23V	26	13	50.0%	17	65.4%	20	76.9%	16	61.5%	23	88.5%	16	61.5%	17	65.4%	14	53.8%	12	46.2%	9	34.6%	6	23.1%	10	38.5%
C	1313	968	73.7%	1099	83.7%	1166	88.8%	1136	86.5%	1078	82.1%	914	69.6%	777	59.2%	683	52.0%	621	47.3%	576	43.9%	493	37.5%	473	36.0%
V/C TOTAL	1,395	988	70.8%	1,122	80.4%	1,196	85.7%	1,184	84.9%	1,144	82.0%	961	68.9%	823	59.0%	728	52.2%	655	47.0%	615	44.1%	532	38.1%	518	37.1%
Armory	20	11	55.0%	12	60.0%	12	60.0%	12	60.0%	12	60.0%	11	55.0%	11	55.0%	10	50.0%	9	45.0%	11	55.0%	11	55.0%	9	45.0%
Edens Service Rd	3	2	66.7%	2	66.7%	2	66.7%	2	66.7%	2	66.7%	2	66.7%	2	66.7%	2	66.7%	1	33.3%	1	33.3%	1	33.3%	1	33.3%
CBS	15	1	6.7%	2	13.3%	3	20.0%	5	33.3%	5	33.3%	4	26.7%	3	20.0%	3	20.0%	2	13.3%	2	13.3%	1	6.7%	1	6.7%
ALUMNI HOUSE	2	0	0.0%	0	0.0%	0	0.0%	0	0.0%	1	50.0%	1	50.0%	0	0.0%	0	0.0%	0	0.0%	0	0.0%	0	0.0%	0	0.0%
Arntzen Ramp	3	0	0.0%	1	33.3%	1	33.3%	0	0.0%	0	0.0%	1	33.3%	2	66.7%	1	33.3%	0	0.0%	0	0.0%	0	0.0%	1	33.3%
Bond Hall	7	5	71.4%	3	42.9%	4	57.1%	3	42.9%	6	85.7%	6	85.7%	4	57.1%	6	85.7%	4	57.1%	5	71.4%	2	28.6%	2	28.6%
Fairhaven Service Rd	5	3	60.0%	2	40.0%	2	40.0%	2	40.0%	0	0.0%	1	20.0%	0	0.0%	1	20.0%	0	0.0%	0	0.0%	0	0.0%	0	0.0%
Fuel Dock	7	3	42.9%	3	42.9%	3	42.9%	3	42.9%	3	42.9%	4	57.1%	4	57.1%	2	28.6%	1	14.3%	1	14.3%	1	14.3%	1	14.3%
Nash Turnaround	3	0	0.0%	0	0.0%	0	0.0%	0	0.0%	0	0.0%	0	0.0%	0	0.0%	0	0.0%	0	0.0%	1	33.3%	0	0.0%	0	0.0%
Viking Union Service Rd	3	2	66.7%	2	66.7%	3	100.0%	3	100.0%	3	100.0%	3	100.0%	3	100.0%	3	100.0%	3	100.0%	3	100.0%	3	100.0%	3	100.0%
Art Annex	2	0	0.0%	0	0.0%	1	50.0%	0	0.0%	0	0.0%	0	0.0%	1	50.0%	0	0.0%	0	0.0%	0	0.0%	0	0.0%	0	0.0%
Ridgeway Service Road	2	1	50.0%	0	0.0%	0	0.0%	2	100.0%	2	100.0%	0	0.0%	1	50.0%	0	0.0%	0	0.0%	0	0.0%	0	0.0%	1	50.0%
VU Dock/VU SRV/Alley	3	0	0.0%	0	0.0%	0	0.0%	0	0.0%	0	0.0%	0	0.0%	0	0.0%	0	0.0%	0	0.0%	0	0.0%	0	0.0%	2	66.7%
Bio Green House	3	0	0.0%	0	0.0%	2	66.7%	1	33.3%	2	66.7%	1	33.3%	2	66.7%	1	33.3%	1	33.3%	1	33.3%	1	33.3%	1	33.3%
ARCHIVES	0	0	0.0%	0	0.0%	0	0.0%	0	0.0%	0	0.0%	0	0.0%	0	0.0%	0	0.0%	0	0.0%	0	0.0%	0	0.0%	0	0.0%
AIC	17	2	11.8%	7	41.2%	5	29.4%	6	35.3%	9	52.9%	6	35.3%	6	35.3%	5	29.4%	4	23.5%	1	5.9%	2	11.8%	2	11.8%
Engineering	20	17	85.0%	19	95.0%	18	90.0%	20	100.0%	20	100.0%	17	85.0%	18	90.0%	17	85.0%	6	30.0%	3	15.0%	4	20.0%	3	15.0%
MISC TOTAL	115	47	40.9%	53	46.1%	56	48.7%	59	51.3%	65	56.5%	58	50.4%	57	49.6%	51	44.3%	31	27.0%	29	25.2%	27	23.5%	25	21.7%
TOTAL	3,433	2,335	68.0%	2,594	75.6%	2,709	78.9%	2,691	78.4%	2,646	77.1%	2,396	69.8%	2,221	64.7%	1,993	58.1%	1,620	47.2%	1,545	45.0%	1,460	42.5%	1,419	41.3%

2015 WWU Parking Occupancy Data - Friday, November 20

Time Period Counted:		9:00 - 10:00		10:00 - 11:00		11:00 - 12:00		12:00 - 1:00		1:00 - 2:00		2:00 - 3:00		3:00 - 4:00		4:00 - 5:00		5:00 - 6:00		6:00 - 7:00		7:00 - 8:00		8:00 - 9:00	
Lot	2015 Capacity	Occupancy Stalls	%	Occupancy Stalls	%	Occupancy Stalls	%	Occupancy Stalls	%	Occupancy Stalls	%	Occupancy Stalls	%	Occupancy Stalls	%	Occupancy Stalls	%	Occupancy Stalls	%	Occupancy Stalls	%	Occupancy Stalls	%	Occupancy Stalls	%
1R	35	31	88.6%	31	88.6%	28	80.0%	23	65.7%	25	71.4%	26	74.3%	26	74.3%	27	77.1%	<i>collected Tuesday and Wednesday only</i>							
3R	158	131	82.9%	126	79.7%	133	84.2%	124	78.5%	125	79.1%	112	70.9%	108	68.4%	100	63.3%								
4R	81	73	90.1%	74	91.4%	72	88.9%	71	87.7%	70	86.4%	67	82.7%	59	72.8%	55	67.9%								
15R	98	85	86.7%	85	86.7%	85	86.7%	85	86.7%	80	81.6%	82	83.7%	77	78.6%	69	70.4%								
18R	94	85	90.4%	82	87.2%	84	89.4%	83	88.3%	78	83.0%	79	84.0%	69	73.4%	66	70.2%								
20R	40	37	92.5%	37	92.5%	37	92.5%	38	95.0%	33	82.5%	31	77.5%	30	75.0%	29	72.5%								
27R	226	174	77.0%	163	72.1%	159	70.4%	150	66.4%	148	65.5%	151	66.8%	133	58.8%	130	57.5%								
R TOTAL	732	616	84.2%	598	81.7%	598	81.7%	574	78.4%	559	76.4%	548	74.9%	502	68.6%	476	65.0%								
5G	24	17	70.8%	17	70.8%	18	75.0%	15	62.5%	22	91.7%	17	70.8%	18	75.0%	16	66.7%								
7G	130	97	74.6%	111	85.4%	113	86.9%	106	81.5%	107	82.3%	109	83.8%	107	82.3%	78	60.0%								
8G	22	10	45.5%	16	72.7%	8	36.4%	7	31.8%	9	40.9%	9	40.9%	9	40.9%	10	45.5%								
10G	62	15	24.2%	16	25.8%	16	25.8%	14	22.6%	20	32.3%	18	29.0%	17	27.4%	16	25.8%								
11G	51	29	56.9%	28	54.9%	28	54.9%	28	54.9%	30	58.8%	23	45.1%	24	47.1%	24	47.1%								
12A	245	124	50.6%	135	55.1%	156	63.7%	152	62.0%	143	58.4%	140	57.1%	131	53.5%	89	36.3%								
26 CP	17	10	58.8%	13	76.5%	11	64.7%	13	76.5%	10	58.8%	11	64.7%	9	52.9%	8	47.1%								
13A	31	12	38.7%	11	35.5%	12	38.7%	11	35.5%	11	35.5%	10	32.3%	10	32.3%	10	32.3%								
14G	123	82	66.7%	90	73.2%	95	77.2%	96	78.0%	92	74.8%	84	68.3%	66	53.7%	53	43.1%								
17G	131	107	81.7%	97	74.0%	110	84.0%	113	86.3%	108	82.4%	95	75.6%	83	63.4%	53	40.5%								
19G	92	53	57.6%	61	66.3%	68	73.9%	62	67.4%	59	64.1%	49	53.3%	50	54.3%	40	43.5%								
22G	20	12	60.0%	11	55.0%	11	55.0%	11	55.0%	10	50.0%	11	55.0%	10	50.0%	10	50.0%								
24G	106	44	41.5%	46	43.4%	42	39.6%	36	34.0%	40	37.7%	42	39.6%	37	34.9%	36	34.0%								
25G	17	10	58.8%	11	64.7%	12	70.6%	10	58.8%	8	47.1%	11	64.7%	11	64.7%	6	35.3%								
29G	8	0	0.0%	1	12.5%	2	25.0%	3	37.5%	4	50.0%	0	0.0%	3	37.5%	2	25.0%								
30G	6	2	33.3%	2	33.3%	2	33.3%	2	33.3%	2	33.3%	2	33.3%	2	33.3%	1	16.7%								
32G	82	34	41.6%	29	35.4%	28	34.1%	27	32.9%	33	40.2%	35	42.7%	31	37.8%	26	31.7%								
33G	24	4	16.7%	4	16.7%	4	16.7%	4	16.7%	6	25.0%	6	25.0%	5	20.8%	6	25.0%								
G TOTAL	1,191	662	55.6%	699	58.7%	736	61.8%	710	59.6%	714	59.9%	676	56.8%	623	52.3%	484	40.6%								
6V	56	37	66.1%	49	87.5%	44	78.6%	51	91.1%	43	76.8%	41	73.2%	31	55.4%	27	48.2%								
23V	26	9	34.6%	11	42.3%	15	57.7%	17	65.4%	16	61.5%	13	50.0%	11	42.3%	9	34.6%								
C	1313	871	66.3%	958	73.7%	988	75.2%	991	75.5%	932	71.0%	743	56.6%	533	40.6%	391	29.8%								
V/C TOTAL	1,395	917	65.7%	1,028	73.7%	1,047	75.1%	1,059	75.9%	991	71.0%	797	57.1%	575	41.2%	427	30.6%								
Armory	20	10	50.0%	12	60.0%	13	65.0%	13	65.0%	13	65.0%	12	60.0%	11	55.0%	11	55.0%								
Edens Service Rd	3	2	66.7%	3	100.0%	3	100.0%	3	100.0%	3	100.0%	3	100.0%	3	100.0%	3	100.0%								
CBS	15	6	40.0%	4	26.7%	3	20.0%	3	20.0%	4	26.7%	4	26.7%	3	20.0%	3	20.0%								
ALUMNI HOUSE	2	0	0.0%	0	0.0%	1	50.0%	0	0.0%	0	0.0%	0	0.0%	0	0.0%	0	0.0%								
Arntzen Ramp	3	0	0.0%	2	66.7%	3	100.0%	1	33.3%	0	0.0%	0	0.0%	1	33.3%	2	66.7%								
Bond Hall	7	2	28.6%	4	57.1%	5	71.4%	6	85.7%	4	57.1%	3	42.9%	3	42.9%	4	57.1%								
Fairhaven Service Rd	5	0	0.0%	0	0.0%	0	0.0%	1	20.0%	1	20.0%	0	0.0%	0	0.0%	1	20.0%								
Fuel Dock	7	2	28.6%	2	28.6%	2	28.6%	2	28.6%	2	28.6%	1	14.3%	1	14.3%	1	14.3%								
Nash Turnaround	3	0	0.0%	0	0.0%	0	0.0%	1	33.3%	0	0.0%	0	0.0%	0	0.0%	0	0.0%								
Viking Union Service Rd	3	3	100.0%	3	100.0%	2	66.7%	3	100.0%	3	100.0%	3	100.0%	3	100.0%	3	100.0%								
Art Annex	2	2	100.0%	1	50.0%	1	50.0%	2	100.0%	2	100.0%	2	100.0%	2	100.0%	2	100.0%								
Ridgeway Service Road	2	1	50.0%	1	100.0%	0	0.0%	1	50.0%	1	50.0%	2	100.0%	2	100.0%	0	0.0%								
VU Dock/VU SRV/Alley	3	0	0.0%	0	0.0%	0	0.0%	0	0.0%	0	0.0%	0	0.0%	0	0.0%	0	0.0%								
Bio Green House	3	3	100.0%	1	33.3%	2	66.7%	2	66.7%	2	66.7%	1	33.3%	1	33.3%	1	33.3%								
ARCHIVES	0	0	0.0%	0	0.0%	0	0.0%	0	0.0%	0	0.0%	0	0.0%	0	0.0%	0	0.0%								
AIC	17	4	23.5%	3	17.6%	6	35.3%	5	29.4%	6	35.3%	7	41.2%	6	35.3%	7	41.2%								
Engineering	20	13	65.0%	18	90.0%	19	95.0%	17	85.0%	17	85.0%	16	80.0%	15	75.0%	12	60.0%								
MISC TOTAL	115	48	41.7%	55	47.8%	60	52.2%	60	52.2%	58	50.4%	54	47.0%	51	44.3%	50	43.5%								
TOTAL	3,433	2,243	65.3%	2,380	69.3%	2,441	71.1%	2,403	70.0%	2,322	67.6%	2,075	60.4%	1,751	51.0%	1,437	41.9%								

2015 WWU Parking Occupancy Data - Weekday Average

Time Period Counted:		9:00 - 10:00		10:00 - 11:00		11:00 - 12:00		12:00 - 1:00		1:00 - 2:00		2:00 - 3:00		3:00 - 4:00		4:00 - 5:00		5:00 - 6:00		6:00 - 7:00		7:00 - 8:00		8:00 - 9:00	
Lot	2015 Capacity	Occupancy Stalls	Occupancy %	Occupancy Stalls	Occupancy %	Occupancy Stalls	Occupancy %	Occupancy Stalls	Occupancy %	Occupancy Stalls	Occupancy %	Occupancy Stalls	Occupancy %	Occupancy Stalls	Occupancy %	Occupancy Stalls	Occupancy %	Occupancy Stalls	Occupancy %	Occupancy Stalls	Occupancy %	Occupancy Stalls	Occupancy %	Occupancy Stalls	Occupancy %
1R	33	28	84.1%	27	82.6%	27	80.3%	26	78.8%	27	81.1%	25	75.0%	27	80.3%	27	80.3%	27	80.3%	26	78.8%	25	75.8%	24	71.2%
3R	162	126	77.6%	133	81.8%	133	82.3%	129	79.8%	128	78.7%	125	77.0%	124	76.5%	120	74.1%	114	70.4%	117	71.9%	116	71.6%	116	71.6%
4R	81	77	94.7%	76	93.8%	75	93.0%	75	92.2%	71	87.7%	71	87.2%	69	85.6%	69	84.8%	67	82.1%	63	77.8%	64	79.0%	64	78.4%
15R	99	90	90.6%	86	87.2%	87	87.5%	87	88.2%	90	90.9%	85	85.9%	81	81.8%	80	80.5%	82	82.8%	87	87.9%	85	85.9%	86	86.4%
18R	94	83	87.8%	85	89.9%	85	90.7%	82	87.0%	82	87.0%	80	85.1%	77	81.6%	73	77.9%	73	77.7%	74	78.2%	73	77.1%	73	77.1%
20R	40	37	93.3%	37	92.5%	36	90.8%	35	87.5%	34	85.0%	33	82.5%	33	81.7%	32	80.8%	33	82.5%	33	81.3%	33	81.3%	32	80.0%
27R	230	172	74.9%	170	73.9%	169	73.6%	172	74.8%	167	72.7%	160	69.7%	157	68.0%	163	70.8%	154	67.0%	156	67.6%	145	62.8%	138	59.8%
R TOTAL	739	612	82.8%	614	83.0%	613	82.9%	606	82.0%	598	81.0%	578	78.3%	567	76.7%	563	76.2%	549	74.3%	554	75.0%	540	73.0%	531	71.8%
5G	25	19	76.0%	20	81.0%	22	89.0%	18	73.0%	18	72.0%	20	79.0%	19	77.0%	16	63.0%	10	38.0%	5	20.0%	9	34.0%	9	36.0%
7G	122	110	90.4%	117	95.7%	116	94.9%	110	90.0%	112	91.6%	108	88.7%	102	83.2%	92	75.2%	47	38.1%	23	18.9%	21	17.2%	18	14.8%
8G	22	13	58.0%	12	55.7%	13	58.0%	11	51.1%	12	54.5%	13	56.8%	11	51.1%	11	51.1%	9	40.9%	2	9.1%	2	6.8%	1	4.5%
10G	61	19	31.8%	20	33.2%	21	34.4%	20	32.4%	19	31.1%	18	28.7%	19	30.3%	17	27.9%	11	17.2%	4	5.7%	4	5.7%	3	4.9%
11G	58	26	44.8%	32	55.2%	35	59.8%	32	54.6%	23	40.2%	27	47.1%	33	57.5%	29	49.4%	32	54.3%	39	66.4%	44	75.0%	42	71.6%
12A	254	151	59.5%	167	65.6%	179	70.6%	185	72.9%	183	71.9%	169	66.5%	161	63.3%	138	54.2%	87	34.1%	75	29.3%	66	25.8%	59	23.2%
26CP	18	12	65.3%	12	66.7%	14	75.0%	14	79.2%	15	81.9%	14	79.2%	14	76.4%	15	81.9%	17	91.7%	15	83.3%	17	91.7%	17	91.7%
13A	31	14	44.4%	13	40.3%	12	38.7%	11	34.7%	12	37.1%	11	36.3%	13	40.3%	13	42.7%	2	4.8%	2	4.8%	1	1.6%	1	1.6%
14G	124	90	72.6%	105	84.7%	113	91.4%	114	92.2%	112	90.3%	106	85.2%	100	80.6%	84	68.0%	47	37.5%	35	28.2%	55	44.0%	54	43.1%
17G	132	84	63.4%	105	79.2%	108	81.8%	108	81.8%	106	80.5%	100	75.6%	92	69.9%	88	66.3%	53	39.8%	50	37.5%	57	42.8%	54	40.5%
19G	99	76	76.8%	82	83.1%	84	84.6%	86	87.1%	84	84.8%	81	82.1%	73	74.0%	64	64.1%	57	57.6%	48	48.5%	48	48.5%	46	46.5%
22G	24	12	50.0%	14	57.3%	14	59.4%	12	50.0%	13	54.2%	13	55.2%	15	63.5%	13	55.2%	6	22.9%	9	35.4%	8	33.3%	7	27.1%
24G	92	48	51.6%	47	50.5%	49	52.7%	39	42.4%	46	50.0%	44	47.6%	44	47.8%	43	46.7%	7	7.6%	4	4.3%	4	4.3%	4	3.8%
25G	17	11	62.7%	12	70.6%	13	78.4%	14	82.4%	13	74.5%	12	68.6%	12	68.6%	10	58.8%	8	47.1%	5	26.5%	7	41.2%	9	50.0%
29G	8	2	21.9%	4	43.8%	5	59.4%	4	43.8%	5	59.4%	3	34.4%	3	37.5%	3	31.3%	0	0.0%	2	18.8%	2	18.8%	1	12.5%
30G	6	3	45.8%	2	37.5%	2	37.5%	2	33.3%	3	41.7%	2	37.5%	2	33.3%	2	25.0%	1	16.7%	2	25.0%	2	33.3%	2	33.3%
32G	80	33	40.9%	34	42.2%	32	39.7%	31	39.1%	29	36.3%	29	36.3%	28	35.0%	28	34.7%	19	23.1%	12	14.4%	9	11.3%	9	11.3%
33G	24	7	28.1%	7	27.1%	6	22.9%	5	20.8%	8	34.4%	8	33.3%	7	28.1%	7	28.1%	3	10.4%	3	10.4%	3	12.5%	4	14.6%
G TOTAL	1,197	728	60.8%	803	67.1%	837	69.9%	816	68.2%	811	67.8%	777	64.9%	747	62.4%	670	56.0%	410	34.3%	330	27.5%	354	29.5%	336	28.0%
6V	56	29	51.8%	36	64.3%	36	63.7%	43	76.8%	43	76.2%	37	66.1%	38	67.9%	32	57.1%	25	43.8%	26	46.4%	32	57.1%	34	60.7%
23V	26	9	32.7%	14	53.8%	14	52.9%	11	43.3%	15	55.8%	14	54.8%	15	58.7%	13	50.0%	10	38.5%	7	25.0%	5	17.3%	10	36.5%
C	1313	903	68.8%	1024	78.0%	1073	81.7%	1075	81.9%	1022	77.9%	928	70.7%	786	59.8%	644	49.0%	633	48.2%	603	45.9%	512	39.0%	486	37.0%
V/C TOTAL	1,395	940	67.4%	1074	77.0%	1123	80.5%	1129	80.9%	1079	77.4%	979	70.2%	839	60.1%	689	49.4%	667	47.8%	636	45.6%	548	39.3%	530	38.0%
Armory	20	11	53.3%	11	55.0%	11	56.7%	12	58.3%	11	56.7%	11	55.0%	11	55.0%	10	50.0%	9	45.0%	10	50.0%	9	42.5%	8	37.5%
Edens Service Rd	3	3	91.7%	3	83.3%	3	83.3%	3	83.3%	2	75.0%	3	83.3%	2	58.3%	1	41.7%	1	16.7%	1	33.3%	1	33.3%	1	33.3%
CBS	17	1	7.8%	3	15.7%	4	23.5%	5	31.4%	5	27.5%	3	19.6%	3	15.7%	2	13.7%	2	11.8%	2	8.8%	1	5.9%	1	5.9%
ALUMNI HOUSE	2	1	25.0%	1	37.5%	1	37.5%	1	50.0%	1	50.0%	1	50.0%	1	50.0%	1	25.0%	0	0.0%	1	25.0%	0	0.0%	1	25.0%
Arntzen Ramp	3	2	50.0%	1	41.7%	2	50.0%	2	50.0%	1	41.7%	2	66.7%	1	41.7%	0	8.3%	1	16.7%	0	0.0%	0	0.0%	1	16.7%
Bond Hall	7	5	71.4%	4	61.9%	4	57.1%	4	52.4%	4	57.1%	3	38.1%	2	33.3%	3	47.6%	4	50.0%	5	71.4%	3	35.7%	3	35.7%
Fairhaven Service Rd	5	2	30.0%	2	35.0%	1	20.0%	1	20.0%	1	15.0%	1	25.0%	2	30.0%	2	30.0%	1	10.0%	0	0.0%	0	0.0%	0	0.0%
Fuel Dock	7	5	64.3%	5	64.3%	4	60.7%	4	60.7%	5	71.4%	5	75.0%	5	75.0%	3	46.4%	2	28.6%	1	14.3%	1	7.1%	1	7.1%
Nash Turn around	3	0	0.0%	0	0.0%	0	0.0%	1	22.2%	0	0.0%	0	0.0%	0	0.0%	0	11.1%	0	0.0%	2	66.7%	0	0.0%	1	16.7%
Viking Union Service Rd	10	2	23.3%	3	25.0%	3	30.0%	3	30.0%	3	30.0%	3	30.0%	3	30.0%	3	30.0%	2	20.0%	3	25.0%	2	20.0%	3	25.0%
Fine Arts	2	2	75.0%	2	75.0%	2	87.5%	2	75.0%	2	75.0%	2	75.0%	2	87.5%	1	62.5%	1	25.0%	1	25.0%	1	25.0%	1	25.0%
Ridgeway Service Road	2	1	50.0%	2	75.0%	1	62.5%	2	100.0%	2	87.5%	1	62.5%	1	62.5%	1	50.0%	1	25.0%	1	25.0%	1	25.0%	0	0.0%
VU Dock/VU SRV/Alley	3	0	0.0%	0	0.0%	0	0.0%	0	0.0%	0	0.0%	0	0.0%	0	0.0%	0	0.0%	0	0.0%	0	0.0%	0	0.0%	1	33.3%
Bio Green House	3	1	33.3%	1	33.3%	2	50.0%	1	25.0%	1	33.3%	2	50.0%	1	41.7%	1	25.0%	1	16.7%	1	33.3%	1	33.3%	1	33.3%
ARCHIVES	0	0	0.0%	0	0.0%	0	0.0%	0	0.0%	0	0.0%	0	0.0%	0	0.0%	0	0.0%	0	0.0%	0	0.0%	0	0.0%	0	0.0%
AIC	17	4	22.1%	5	26.5%	5	27.9%	5	30.9%	8	44.1%	7	39.7%	10	55.9%	10	55.9%	5	29.4%	2	8.8%	2	11.8%	2	8.8%
Engineering	20	18	90.0%	20	97.5%	19	93.8%	19	96.3%	20	100.0%	19	95.0%	18	91.3%	18	91.3%	8	40.0%	4	20.0%	4	17.5%	3	12.5%
MISC TOTAL	124	55	44.6%	59	47.8%	60	48.7%	63	51.1%	65	52.4%	62	50.0%	62	49.6%	57	45.6%	35	27.8%	31	25.0%	23	18.5%	23	18.5%
Motorcycle Parking																									
(not included in respective parking areas)																									
TOTAL	3,455	2,335	67.6%	2,550	73.8%	2,632	76.2%	2,615	75.7%	2,554	73.9%	2,397	69.4%	2,214	64.1%	1,979	57.3%	1,661	48.1%	1,550	44.9%	1,464	42.4%	1,419	41.1%

2015 Lincoln Creek Park and Ride Summary

Time	Supply	Monday		Tuesday		Wednesday		Thursday		Friday	
		Demand	Utilization	Demand	Utilization	Demand	Utilization	Demand	Utilization	Demand	Utilization
9:00 - 10:00 AM	511	274	54%	290	57%	261	51%	238	47%	219	43%
10:00 - 11:00 AM	511	288	56%	301	59%	271	53%	253	50%	225	44%
11:00 - 12:00 PM	511	303	59%	319	62%	285	56%	251	49%	217	42%
12:00 - 1:00 PM	511	292	57%	295	58%	276	54%	227	44%	223	44%
1:00 - 2:00 PM	511	267	52%	284	56%	242	47%	211	41%	198	39%
2:00 - 3:00 PM	511	243	48%	247	48%	183	36%	187	37%	142	28%
3:00 - 4:00 PM	511	202	40%	187	37%	151	30%	146	29%	91	18%
4:00 - 5:00 PM	511	117	23%	116	23%	83	16%	83	16%	43	8%
5:00 - 6:00 PM	511			94	18%	39	8%				
6:00 - 7:00 PM	511			41	8%	25	5%				
7:00 - 8:00 PM	511			28	5%	14	3%				
8:00 - 9:00 PM	511			13	3%	7	1%				

APPENDIX B Historical Count Summary

**Table B8. Year 2006 Summary Results
By Lot Lype
2006**

G Lots		Capacity	9:00-10:00	10:00-11:00	11:00-12:00	12:00-1:00	1:00-2:00	2:00-3:00	3:00-4:00	4:00-5:00	5:00-6:00	6:00-7:00	7:00-8:00	8:00-9:00
Monday	11/13/2005	1,183	640	846	850	830	847	828	826	743				
Tuesday	11/14/2005	1,183	737	831	858	832	804	754	771	693	452	405	451	439
Wednesday	11/15/2005	1,183	734	850	861	820	845	821	812	697	426	372	490	564
Thursday	11/16/2005	1,183	644	757	810	795	799	764	703	659				
R Lots														
Monday	11/13/2005	1,061	830	849	859	848	844	844	813	777				
Tuesday	11/14/2005	1,061	847	850	858	853	836	801	802	775	755	759	742	779
Wednesday	11/15/2005	1,061	879	874	876	862	855	847	823	805	791	758	753	778
Thursday	11/16/2005	1,061	855	863	863	851	828	824	798	773				
C and V Lots														
Monday	11/13/2005	1,022	526	865	839	847	830	807	658	593				
Tuesday	11/14/2005	1,022	562	776	804	794	734	701	588	453	441	374	359	281
Wednesday	11/15/2005	1,022	748	835	907	875	835	730	591	454	368	379	348	288
Thursday	11/16/2005	1,022	550	769	781	757	760	651	588	471				
Miscellaneous Lots														
Monday	11/13/2005	113	52	61	59	60	58	56	55	45				
Tuesday	11/14/2005	113	51	56	53	54	54	54	55	41	36	32	26	28
Wednesday	11/15/2005	113	51	59	60	59	51	49	52	43	41	40	35	41
Thursday	11/16/2005	113	52	51	55	57	55	56	56	57				
TOTAL 2006														
Monday	11/13/2005	3,379	2,048	2,621	2,607	2,585	2,579	2,535	2,352	2,158				
Tuesday	11/14/2005	3,379	2,197	2,513	2,573	2,533	2,428	2,310	2,216	1,962	1,684	1,570	1,578	1,527
Wednesday	11/15/2005	3,379	2,412	2,618	2,704	2,616	2,586	2,447	2,278	1,999	1,626	1,549	1,626	1,671
Thursday	11/16/2005	3,379	2,101	2,440	2,509	2,460	2,442	2,295	2,145	1,960				
AVERAGE 2006			2,190	2,548	2,598	2,549	2,509	2,397	2,248	2,020	1,655	1,560	1,602	1,599
		3,379	64.8%	75.4%	76.9%	75.4%	74.2%	70.9%	66.5%	59.8%	49.0%	46.2%	47.4%	47.3%

APPENDIX B Historical Count Summary

**Table B9. Year 2007 Summary Results
By Lot Lype
2007**

G Lots		Capacity	9:00-10:00	10:00-11:00	11:00-12:00	12:00-1:00	1:00-2:00	2:00-3:00	3:00-4:00	4:00-5:00	5:00-6:00	6:00-7:00	7:00-8:00	8:00-9:00
Monday	11/5/2007	1,191	845	866	860	760	756	757	740	719				
Tuesday	11/6/2007	1,191	766	788	859	818	795	773	726	678	475	322	272	268
Wednesday	11/7/2007	1,191	777	857	865	870	825	830	757	685	489	333	287	280
Thursday	11/8/2007	1,191	762	836	826	802	816	824	757	658				
R Lots														
Monday	11/5/2007	1,063	747	762	784	755	768	726	714	683				
Tuesday	11/6/2007	1,063	724	753	769	732	747	733	717	670	681	622	580	552
Wednesday	11/7/2007	1,063	743	757	818	827	759	747	724	678	688	627	588	556
Thursday	11/8/2007	1,063	759	816	784	722	704	686	675	646				
C and V Lots														
Monday	11/5/2007	1,022	976	994	994	989	985	936	904	799				
Tuesday	11/6/2007	1,022	1,011	1,009	1,012	990	977	1,029	898	861	765	701	561	271
Wednesday	11/7/2007	1,022	978	1,004	996	984	1,003	941	925	912	813	747	598	287
Thursday	11/8/2007	1,022	221	548	560	536	563	477	431	400				
Miscellaneous Lots														
Monday	11/5/2007	110	50	60	57	55	52	58	48	45				
Tuesday	11/6/2007	110	43	43	47	52	47	49	47	52	45	37	26	13
Wednesday	11/7/2007	110	43	52	47	54	53	56	46	44	38	31	24	13
Thursday	11/8/2007	110	39	49	50	48	53	46	48	49				
TOTAL 2007														
Monday	11/5/2007	3,386	2,048	2,621	2,607	2,585	2,579	2,535	2,352	2,158				
Tuesday	11/6/2007	3,386	2,197	2,513	2,573	2,533	2,428	2,310	2,216	1,962	1,684	1,570	1,578	1,527
Wednesday	11/7/2007	3,386	2,412	2,618	2,704	2,616	2,586	2,447	2,278	1,999	1,626	1,549	1,626	1,671
Thursday	11/8/2007	3,386	2,101	2,440	2,509	2,460	2,442	2,295	2,145	1,960				
AVERAGE 2007			2,190	2,548	2,598	2,549	2,509	2,397	2,248	2,020	1,655	1,560	1,602	1,599
		3,386	64.7%	75.3%	76.7%	75.3%	74.1%	70.8%	66.4%	59.7%	48.9%	46.1%	47.3%	47.2%

APPENDIX B Historical Count Summary

**Table B10. Year 2008 Summary Results
By Lot Lype
2008**

G Lots		Capacity	9:00-10:00	10:00-11:00	11:00-12:00	12:00-1:00	1:00-2:00	2:00-3:00	3:00-4:00	4:00-5:00	5:00-6:00	6:00-7:00	7:00-8:00	8:00-9:00
Monday	11/17/2008	1,158	688	770	815	769	786	791	749	672				
Tuesday	11/18/2008	1,158	666	785	820	770	779	826	736	643	447	360	388	385
Wednesday	11/19/2008	1,158	699	819	823	804	822	803	840	615	432	337	355	394
Thursday	11/20/2008	1,158	691	772	806	757	783	784	770	658				
R Lots														
Monday	11/17/2008	1,063	778	797	793	788	789	726	757	702				
Tuesday	11/18/2008	1,063	805	805	802	785	763	743	719	712	697	712	703	707
Wednesday	11/19/2008	1,063	827	817	812	805	777	765	744	727	710	690	684	690
Thursday	11/20/2008	1,063	800	790	780	780	769	742	739	733				
C and V Lots														
Monday	11/17/2008	1,154	593	780	855	785	808	757	620	472				
Tuesday	11/18/2008	1,154	512	717	746	727	693	633	528	443	434	458	455	392
Wednesday	11/19/2008	1,154	607	739	812	809	770	773	604	458	383	355	344	306
Thursday	11/20/2008	1,154	545	704	699	697	664	626	546	436				
Miscellaneous Lots														
Monday	11/17/2008	100	45	44	47	44	44	47	46	45				
Tuesday	11/18/2008	100	46	47	42	49	49	44	41	38	26	23	24	22
Wednesday	11/19/2008	100	52	56	52	52	53	54	49	41	39	27	29	28
Thursday	11/20/2008	100	44	47	48	53	47	48	51	45				
TOTAL 2008														
Monday	11/17/2008	3,475	2,104	2,391	2,510	2,386	2,427	2,321	2,172	1,891				
Tuesday	11/18/2008	3,475	2,029	2,354	2,410	2,331	2,284	2,246	2,024	1,836	1,604	1,553	1,570	1,506
Wednesday	11/19/2008	3,475	2,185	2,431	2,499	2,470	2,422	2,395	2,237	1,841	1,564	1,409	1,412	1,418
Thursday	11/20/2008	3,475	2,080	2,313	2,333	2,287	2,263	2,200	2,106	1,872				
AVERAGE 2008			2,100	2,372	2,438	2,369	2,349	2,291	2,135	1,860	1,584	1,481	1,491	1,462
		3,475	60.4%	68.3%	70.2%	68.2%	67.6%	65.9%	61.4%	53.5%	45.6%	42.6%	42.9%	42.1%

APPENDIX B Historical Count Summary

**Table B11. Year 2009 Summary Results
By Lot Lype
2009**

G Lots		Capacity	9:00-10:00	10:00-11:00	11:00-12:00	12:00-1:00	1:00-2:00	2:00-3:00	3:00-4:00	4:00-5:00	5:00-6:00	6:00-7:00	7:00-8:00	8:00-9:00
Monday	11/17/2008	1,152	-	-	-	-	880	885	829	728				
Tuesday	11/18/2008	1,152	682	809	833	798	819	806	773	671	470	451	548	539
Wednesday	11/19/2008	1,152	755	865	890	877	857	884	828	734	575	478	481	505
Thursday	11/20/2008	1,152	652	786	815	817	822	837	798	717				
R Lots														
Monday	11/17/2008	947	-	-	-	-	754	726	752	744				
Tuesday	11/18/2008	947	817	807	815	801	793	777	758	742	743	743	738	736
Wednesday	11/19/2008	947	818	812	812	816	806	799	772	743	734	732	719	724
Thursday	11/20/2008	947	800	794	788	786	780	767	757	735				
C and V Lots														
Monday	11/17/2008	1,154	-	-	-	-	724	782	685	596				
Tuesday	11/18/2008	1,154	586	824	876	863	856	757	702	565	547	480	460	395
Wednesday	11/19/2008	1,154	611	865	964	944	932	897	730	509	436	378	370	334
Thursday	11/20/2008	1,154	455	729	766	793	754	736	624	471				
Miscellaneous Lots														
Monday	11/17/2008	121	-	-	-	-	59	60	58	54				
Tuesday	11/18/2008	121	55	54	55	53	55	58	57	49	44	35	35	44
Wednesday	11/19/2008	121	57	60	56	54	59	66	57	46	39	34	35	31
Thursday	11/20/2008	121	61	60	58	54	55	59	58	56				
TOTAL 2009														
Monday	11/17/2008	3,374	-	-	-	-	2,417	2,453	2,324	2,122				
Tuesday	11/18/2008	3,374	2,140	2,494	2,579	2,515	2,523	2,398	2,290	2,027	1,804	1,709	1,781	1,714
Wednesday	11/19/2008	3,374	2,241	2,602	2,722	2,691	2,654	2,646	2,387	2,032	1,784	1,622	1,605	1,594
Thursday	11/20/2008	3,374	1,968	2,369	2,427	2,450	2,411	2,399	2,237	1,979				
AVERAGE 2009			2,116	2,488	2,576	2,552	2,501	2,474	2,310	2,040	1,794	1,666	1,693	1,654
		3,374	62.7%	73.8%	76.3%	75.6%	74.1%	73.3%	68.4%	60.5%	53.2%	49.4%	50.2%	49.0%

Note: Monday (9am - 1pm) was not included due to a power outage at the school.

APPENDIX B Historical Count Summary

Table B12. Year 2010 Summary Results
By Lot Lype
2010

G Lots		Capacity	9:00-10:00	10:00-11:00	11:00-12:00	12:00-1:00	1:00-2:00	2:00-3:00	3:00-4:00	4:00-5:00	5:00-6:00	6:00-7:00	7:00-8:00	8:00-9:00
Monday	11/15/2010	1,162	712	769	813	804	810	796	734	651				
Tuesday	11/16/2010	1,162	656	759	825	824	822	824	756	695	499	448	559	575
Wednesday	11/17/2010	1,162	697	801	821	790	780	805	752	714	511	428	425	415
Thursday	11/18/2010	1,162	707	761	815	803	794	790	722	641				
R Lots														
Monday	11/15/2010	947	745	753	757	770	769	726	758	732				
Tuesday	11/16/2010	947	761	763	761	767	767	751	734	709	707	705	696	700
Wednesday	11/17/2010	947	783	778	776	782	772	765	755	742	731	721	709	728
Thursday	11/18/2010	947	778	775	766	741	750	746	731	704				
C and V Lots														
Monday	11/15/2010	1,154	744	892	910	892	869	858	803	533				
Tuesday	11/16/2010	1,154	626	722	913	932	885	815	685	618	544	559	589	532
Wednesday	11/17/2010	1,154	709	862	923	927	896	821	792	562	524	513	504	401
Thursday	11/18/2010	1,154	513	752	828	841	830	774	608	599				
Miscellaneous Lots														
Monday	11/15/2010	119	72	79	69	68	63	65	69	66				
Tuesday	11/16/2010	119	60	66	68	64	70	72	75	65	53	45	39	47
Wednesday	11/17/2010	119	61	66	68	66	64	65	59	53	43	38	32	30
Thursday	11/18/2010	119	57	58	64	59	64	65	60	50				
TOTAL 2010														
Monday	11/15/2010	3,382	2,273	2,493	2,549	2,534	2,511	2,445	2,364	1,982				
Tuesday	11/16/2010	3,382	2,103	2,310	2,567	2,587	2,544	2,462	2,250	2,087	1,803	1,757	1,883	1,854
Wednesday	11/17/2010	3,382	2,250	2,507	2,588	2,565	2,512	2,456	2,358	2,071	1,809	1,700	1,670	1,574
Thursday	11/18/2010	3,382	2,055	2,346	2,473	2,444	2,438	2,375	2,121	1,994				
AVERAGE 2010			2,170	2,414	2,544	2,533	2,501	2,435	2,273	2,034	1,806	1,729	1,777	1,714
		3,382	64.2%	71.4%	75.2%	74.9%	74.0%	72.0%	67.2%	60.1%	53.4%	51.1%	52.5%	50.7%

APPENDIX B Historical Count Summary

Table B13. Year 2011 Summary Results
By Lot Lype
2011

G Lots		Capacity	9:00-10:00	10:00-11:00	11:00-12:00	12:00-1:00	1:00-2:00	2:00-3:00	3:00-4:00	4:00-5:00	5:00-6:00	6:00-7:00	7:00-8:00	8:00-9:00
Monday	11/16/2011	1,168	617	732	753	740	724	717	693	580				
Tuesday	11/17/2011	1,168	655	707	774	737	764	729	678	538	396	323	365	397
Wednesday	11/18/2011	1,168	662	702	767	747	740	727	700	628	457	350	308	268
Thursday	11/19/2011	1,168	634	696	722	662	698	693	629	558				
R Lots														
Monday	11/16/2011	978	690	709	727	726	756	726	695	680				
Tuesday	11/17/2011	978	739	744	737	732	733	713	687	684	673	674	702	700
Wednesday	11/18/2011	978	751	740	744	740	744	716	728	693	682	694	673	676
Thursday	11/19/2011	978	751	745	732	715	710	705	685	670				
C and V Lots														
Monday	11/16/2011	1,172	949	876	776	684	826	759	636	514				
Tuesday	11/17/2011	1,172	399	752	765	732	821	743	611	531	436	437	466	473
Wednesday	11/18/2011	1,172	664	820	807	793	782	766	670	529	489	482	504	461
Thursday	11/19/2011	1,172	542	703	767	762	785	698	729	468				
Miscellaneous Lots														
Monday	11/16/2011	125	47	53	51	45	51	61	55	58				
Tuesday	11/17/2011	125	43	51	47	40	49	49	47	42	37	23	19	19
Wednesday	11/18/2011	125	46	48	54	45	52	53	51	44	29	24	25	22
Thursday	11/19/2011	125	38	44	46	50	47	63	50	40				
TOTAL 2011														
Monday	11/16/2011	3,443	2,303	2,370	2,307	2,195	2,357	2,263	2,079	1,832				
Tuesday	11/17/2011	3,443	1,836	2,254	2,323	2,241	2,367	2,234	2,023	1,795	1,542	1,457	1,552	1,589
Wednesday	11/18/2011	3,443	2,123	2,310	2,372	2,325	2,318	2,262	2,149	1,894	1,657	1,550	1,510	1,427
Thursday	11/19/2011	3,443	1,965	2,188	2,267	2,189	2,240	2,159	2,093	1,736				
AVERAGE 2011			2,057	2,281	2,317	2,238	2,321	2,230	2,086	1,814	1,600	1,504	1,531	1,508
		3,443	59.7%	66.2%	67.3%	65.0%	67.4%	64.8%	60.6%	52.7%	46.5%	43.7%	44.5%	43.8%

APPENDIX B Historical Count Summary

**Table B14. Year 2012 Summary Results
By Lot Lype
2012**

G Lots		Capacity	9:00-10:00	10:00-11:00	11:00-12:00	12:00-1:00	1:00-2:00	2:00-3:00	3:00-4:00	4:00-5:00	5:00-6:00	6:00-7:00	7:00-8:00	8:00-9:00
Monday	11/5/2012	1,177	841	934	938	871	912	892	881	695				
Tuesday	11/6/2012	1,177	816	873	890	827	820	856	819	711	510	341	329	312
Wednesday	11/7/2012	1,177	770	881	908	888	871	860	804	717	461	381	360	325
Thursday	11/8/2012	1,177	753	892	907	889	887	889	854	793				
R Lots														
Monday	11/5/2012	977	573	625	704	690	663	631	607	570				
Tuesday	11/6/2012	977	558	587	581	573	566	548	543	522	511	521	523	528
Wednesday	11/7/2012	977	583	645	647	631	624	603	576	557	532	531	526	543
Thursday	11/8/2012	977	563	586	597	592	576	557	525	512				
C and V Lots														
Monday	11/5/2012	1,172	714	898	941	908	825	759	660	640				
Tuesday	11/6/2012	1,172	716	849	856	812	820	769	671	535	543	530	463	394
Wednesday	11/7/2012	1,172	768	878	929	893	878	804	706	685	658	544	531	465
Thursday	11/8/2012	1,172	678	821	868	803	775	751	665	536				
Miscellaneous Lots														
Monday	11/5/2012	112	36	32	35	34	35	37	36	33				
Tuesday	11/6/2012	112	27	32	33	33	36	35	37	42	29	20	21	14
Wednesday	11/7/2012	112	23	33	38	27	38	29	33	28	16	13	11	9
Thursday	11/8/2012	112	23	30	33	35	23	28	28	34				
TOTAL 2012														
Monday	11/5/2012	3,438	2,164	2,489	2,618	2,503	2,435	2,319	2,184	1,938				
Tuesday	11/6/2012	3,438	2,117	2,341	2,360	2,245	2,242	2,208	2,070	1,810	1,593	1,412	1,336	1,248
Wednesday	11/7/2012	3,438	2,144	2,437	2,522	2,439	2,411	2,296	2,119	1,987	1,667	1,469	1,428	1,342
Thursday	11/8/2012	3,438	2,017	2,329	2,405	2,319	2,261	2,225	2,072	1,875				
AVERAGE 2012			2,111	2,399	2,476	2,377	2,337	2,262	2,111	1,903	1,630	1,441	1,382	1,295
		3,438	61.4%	69.8%	72.0%	69.1%	68.0%	65.8%	61.4%	55.3%	47.4%	41.9%	40.2%	37.7%

APPENDIX B Historical Count Summary

Table B15. Year 2013 Summary Results
By Lot Lype
2013

G Lots		Capacity	9:00-10:00	10:00-11:00	11:00-12:00	12:00-1:00	1:00-2:00	2:00-3:00	3:00-4:00	4:00-5:00	5:00-6:00	6:00-7:00	7:00-8:00	8:00-9:00
Monday	11/4/2013	1,183	675	759	754	745	695	692	664	581				
Tuesday	11/5/2013	1,183	692	757	771	736	742	720	677	604	383	335	398	391
Wednesday	11/6/2013	1,183	676	739	771	751	748	720	664	572	380	300	287	277
Thursday	11/4/2013	1,183	630	707	753	768	774	803	769	656				
Friday	11/8/2013	1,183	572	641	660	612	611	576	526	439				
R Lots														
Monday	11/4/2013	739	547	543	544	542	548	540	516	513				
Tuesday	11/5/2013	739	545	543	539	541	531	516	512	507	498	494	430	502
Wednesday	11/6/2013	739	550	555	558	546	545	536	505	497	493	475	503	512
Thursday	11/4/2013	739	550	547	538	539	533	520	510	504				
Friday	11/8/2013	739	535	541	533	521	491	452	406	381				
C and V Lots														
Monday	11/4/2013	1,396	1,067	1,087	1,169	1,172	1,092	983	853	673				
Tuesday	11/5/2013	1,396	998	1,101	1,127	1,016	1,005	923	827	630	566	671	615	528
Wednesday	11/6/2013	1,396	968	1,051	1,172	1,147	1,116	1,042	914	708	676	640	586	492
Thursday	11/4/2013	1,396	952	1,001	1,016	972	949	901	776	621				
Friday	11/8/2013	1,396	842	497	982	961	851	743	591	407				
Miscellaneous Lots														
Monday	11/4/2013	113	40	47	46	42	47	49	48	50				
Tuesday	11/5/2013	113	40	51	47	46	45	44	44	46	33	32	40	41
Wednesday	11/6/2013	113	45	43	47	54	53	51	48	50	39	24	32	22
Thursday	11/4/2013	113	42	38	41	40	35	44	48	49				
Friday	11/8/2013	113	37	40	37	40	34	37	43	43				
TOTAL 2013														
Monday	11/4/2013	3,431	2,329	2,436	2,513	2,501	2,382	2,264	2,081	1,817				
Tuesday	11/5/2013	3,431	2,275	2,452	2,484	2,339	2,323	2,203	2,060	1,787	1,480	1,532	1,483	1,462
Wednesday	11/6/2013	3,431	2,239	2,388	2,548	2,498	2,462	2,349	2,131	1,827	1,588	1,439	1,408	1,303
Thursday	11/4/2013	3,431	2,174	2,293	2,348	2,319	2,291	2,268	2,103	1,830				
Friday	11/8/2013	3,431	1,986	1,719	2,212	2,134	1,987	1,808	1,566	1,270				
AVERAGE 2013														
		3,431	64.1%	69.7%	72.1%	70.4%	68.9%	66.2%	61.0%	52.9%	44.7%	43.3%	42.1%	40.3%

APPENDIX B Historical Count Summary

Table B16. Year 2014 Summary Results
By Lot Lype
2014

G Lots		Capacity	9:00-10:00	10:00-11:00	11:00-12:00	12:00-1:00	1:00-2:00	2:00-3:00	3:00-4:00	4:00-5:00	5:00-6:00	6:00-7:00	7:00-8:00	8:00-9:00
Monday	11/17/2014	1,197	698	850	833	852	851	833	771	643				
Tuesday	11/18/2014	1,197	703	800	679	826	819	821	786	661	432	373	385	343
Wednesday	11/19/2014	1,197	678	809	868	838	840	836	779	658	436	349	330	302
Thursday	11/20/2014	1,197	679	791	841	789	790	775	747	629				
Friday	11/21/2014	1,197	625	715	760	701	683	675	609	538				
R Lots														
Monday	11/17/2014	739	556	567	501	555	559	546	517	528				
Tuesday	11/18/2014	739	564	566	573	558	563	512	506	528	503	511	503	503
Wednesday	11/19/2014	739	587	586	589	573	569	545	535	510	502	503	505	497
Thursday	11/20/2014	739	563	565	553	541	534	527	510	506				
Friday	11/21/2014	739	563	554	567	556	527	523	484	452				
C and V Lots														
Monday	11/17/2014	1,395	910	1,154	1,210	1,184	1,142	1,095	849	658				
Tuesday	11/18/2014	1,395	872	1,070	1,123	1,163	1,055	955	857	677	803	639	597	551
Wednesday	11/19/2014	1,395	932	1,147	1,209	1,201	1,165	1,102	931	682	625	603	623	553
Thursday	11/20/2014	1,395	848	1,110	1,137	1,069	992	938	745	629				
Friday	11/21/2014	1,395	915	1,043	1,063	1,074	989	680	545	434				
Miscellaneous Lots														
Monday	11/17/2014	124	50	69	58	52	50	58	53	50				
Tuesday	11/18/2014	124	44	53	50	46	49	58	51	48	35	29	26	20
Wednesday	11/19/2014	124	53	54	52	58	55	57	45	46	27	31	23	23
Thursday	11/20/2014	124	35	37	45	48	49	48	45	45				
Friday	11/21/2014	124	43	55	51	53	47	57	49	48				
TOTAL 2013														
Monday	11/17/2014	3,455	2,214	2,640	2,602	2,643	2,602	2,532	2,190	1,879				
Tuesday	11/18/2014	3,455	2,183	2,489	2,425	2,593	2,486	2,346	2,200	1,914	1,773	1,552	1,511	1,417
Wednesday	11/19/2014	3,455	2,250	2,596	2,718	2,670	2,629	2,540	2,290	1,896	1,590	1,486	1,481	1,375
Thursday	11/20/2014	3,455	2,125	2,503	2,576	2,447	2,365	2,288	2,047	1,809				
Friday	11/21/2014	3,455	2,146	2,367	2,441	2,384	2,246	1,935	1,687	1,472				
AVERAGE 2013														
		3,455	63.2%	74.0%	74.7%	74.9%	73.0%	70.2%	63.1%	54.3%	48.7%	44.0%	43.3%	40.4%

APPENDIX B Historical Count Summary

**Table B17. Year 2015 Summary Results
By Lot Lype
2015**

G Lots		Capacity	9:00-10:00	10:00-11:00	11:00-12:00	12:00-1:00	1:00-2:00	2:00-3:00	3:00-4:00	4:00-5:00	5:00-6:00	6:00-7:00	7:00-8:00	8:00-9:00
Monday	11/16/2015	1,191	798	803	838	823	858	804	760	674				
Tuesday	11/17/2015	1,191	747	831	862	836	837	790	778	717	434	311	340	323
Wednesday	11/18/2015	1,191	684	789	833	833	819	778	755	650	386	348	367	348
Thursday	11/19/2015	1,191	686	791	819	777	745	740	685	643				
Friday	11/20/2015	1,191	662	699	736	710	714	676	623	484				
R Lots														
Monday	11/16/2015	732	575	588	603	608	618	592	574	572				
Tuesday	11/17/2015	732	629	629	629	621	615	587	574	571	550	555	545	533
Wednesday	11/18/2015	732	616	630	624	615	618	599	586	564	548	553	534	528
Thursday	11/19/2015	732	617	608	597	583	552	540	537	544				
Friday	11/20/2015	732	616	598	598	574	559	548	502	476				
C and V Lots														
Monday	11/16/2015	1,395	1,052	1,147	1,199	1,215	1,128	1,053	852	750				
Tuesday	11/17/2015	1,395	914	1,092	1,098	1,098	1,064	996	865	634	679	656	564	541
Wednesday	11/18/2015	1,395	988	1,122	1,196	1,184	1,144	961	823	728	655	615	532	518
Thursday	11/19/2015	1,395	804	943	1,004	1,027	980	906	808	643				
Friday	11/20/2015	1,395	917	1,028	1,047	1,059	991	797	575	427				
Miscellaneous Lots														
Monday	11/16/2015	115	57	58	58	58	64	67	65	58				
Tuesday	11/17/2015	115	61	62	67	69	68	67	67	59	38	33	19	21
Wednesday	11/18/2015	115	47	53	56	59	65	58	57	51	31	29	27	25
Thursday	11/19/2015	115	52	60	57	61	60	56	53	53				
Friday	11/20/2015	115	48	55	60	60	58	54	51	50				
TOTAL 2015														
Monday	11/16/2015	3,433	2,482	2,596	2,698	2,704	2,668	2,516	2,251	2,054				
Tuesday	11/17/2015	3,433	2,351	2,614	2,656	2,624	2,584	2,440	2,284	1,981	1,701	1,555	1,468	1,418
Wednesday	11/18/2015	3,433	2,335	2,594	2,709	2,691	2,646	2,396	2,221	1,993	1,620	1,545	1,460	1,419
Thursday	11/19/2015	3,433	2,159	2,402	2,477	2,448	2,337	2,242	2,083	1,883				
Friday	11/20/2015	3,433	2,243	2,380	2,441	2,403	2,322	2,075	1,751	1,437				
AVERAGE 2015														
		3,433	67.4%	74.3%	76.8%	76.2%	74.5%	69.9%	64.4%	57.6%	48.4%	45.2%	42.6%	41.3%